



KENDALL COUNTY COMMISSIONERS COURT AGENDA REQUEST

COMMISSIONER COURT DATE: 11/23/2015
OPEN SESSION

SUBJECT	Commissioners Court Meeting Minutes
DEPARTMENT & PERSON MAKING REQUEST	County Clerk's Office Sally W. Peters, Deputy Clerk/Administrative Assistant
PHONE # OR EXTENSION #	830-249-9343, ext. 212
TIME NEEDED FOR PRESENTATION	1 minute
WORDING OF AGENDA ITEM	Consideration and action on approval of the Minutes for November 9 and 12, 2015.
REASON FOR AGENDA ITEM	To approve the Minutes from previous Commissioners Court meetings.
IS THERE DOCUMENTATION	After approval, the minutes will be posted on the County website.
WHO WILL THIS AFFECT?	The public
ADDITIONAL INFORMATION	None



KENDALL COUNTY COMMISSIONERS COURT AGENDA REQUEST

COMMISSIONER COURT DATE: 11/23/2015
OPEN SESSION

SUBJECT	Service awards November 2015		
DEPARTMENT & PERSON MAKING REQUEST	Sheryl D'Spain Treasurer		
PHONE # OR EXTENSION #	830-249-9343 ext 220		
TIME NEEDED FOR PRESENTATION	5 Minutes		
WORDING OF AGENDA ITEM	Robert Eason	10 years	County Attorney's office
REASON FOR AGENDA ITEM	Recognize County employees for their service to the county		
IS THERE DOCUMENTATION	No		
WHO WILL THIS AFFECT?	Countywide		
ADDITIONAL INFORMATION	None		



**KENDALL COUNTY COMMISSIONERS COURT
AGENDA REQUEST**

COMMISSIONER COURT DATE: 11/23/2015
OPEN SESSION

SUBJECT	Monthly Reports - Fee Offices
DEPARTMENT & PERSON MAKING REQUEST	County Auditor's Office Corinna Speer, Auditor
PHONE # OR EXTENSION #	830-249-9343 Ext. 240
TIME NEEDED FOR PRESENTATION	5 Minutes
WORDING OF AGENDA ITEM	Consideration and action on the approval of monthly reports for October 2015.
REASON FOR AGENDA ITEM	To approve monthly reports from fee offices as required by law. To approve monthly reports from departments which collect money for services.
IS THERE DOCUMENTATION	Yes
WHO WILL THIS AFFECT?	Departments who submit a monthly report to the County Auditor's Office.
ADDITIONAL INFORMATION	None

**FEES OF OFFICE REPORTS
FY 2016**

	<u>OCT</u>	<u>NOV</u>	<u>DEC</u>	<u>JAN</u>	<u>FEB</u>	<u>MAR</u>	<u>APR</u>	<u>MAY</u>	<u>JUN</u>	<u>JUL</u>	<u>AUG</u>	<u>SEPT</u>	<u>Total</u>
Animal Control	\$2,852.13												\$2,852.13
Brush Site	\$2,488.00												\$2,488.00
Constable 1	\$1,880.00												\$1,880.00
Constable 2	\$260.00												\$260.00
Constable 3	\$60.00												\$60.00
Constable 4													
County Attorney Fees	\$37.46												\$37.46
Elections-Public Info Fees	\$15.00												\$15.00
Health Inspector	\$765.00												\$765.00
Parks	\$2,100.00												\$2,100.00
Recycling	\$1,204.96												\$1,204.96
Sheriff's Office	\$2,257.81												\$2,257.81
Solid Waste-Boerne	\$9,747.00												\$9,747.00
Solid Waste-Comfort	\$329.00												\$329.00
Treasurer	\$24.40												\$24.40
<i>The following reports contain fees that are remitted to the State of Texas:</i>													
County Clk-Criminal	\$9,357.00												\$9,357.00
County Clk-Fees of Ofc.	\$43,459.85												\$43,459.85
County Clk-Prob Fees	\$2,378.31												\$2,378.31
Development Mgt.	\$6,581.00												\$6,581.00
District Clerk-Citations	\$0.00												\$0.00
District Clerk-Civil	\$14,722.64												\$14,722.64
District Clerk-Criminal	\$6,534.52												\$6,534.52
JP 1	\$6,026.46												\$6,026.46
JP 2	\$4,686.07												\$4,686.07
JP 3	\$7,081.04												\$7,081.04
JP 4	\$22,210.80												\$22,210.80
Tax Assessor													
TOTAL	\$147,058.45												\$147,058.45
<i>FY '15 Totals for Comparison</i>	<i>\$288,776.77</i>	<i>\$0.00</i>	<i>\$0.00</i>	<i>\$0.00</i>	<i>\$0.00</i>	<i>\$0.00</i>	<i>\$0.00</i>	<i>\$0.00</i>	<i>\$0.00</i>	<i>\$0.00</i>	<i>\$0.00</i>	<i>\$0.00</i>	<i>\$288,776.77</i>



KENDALL COUNTY COMMISSIONERS COURT AGENDA REQUEST

COMMISSIONER COURT DATE: 11/23/2015
OPEN SESSION

SUBJECT	Accounts Payable Claims
DEPARTMENT & PERSON MAKING REQUEST	Auditor's Office Corinna Speer, County Auditor
PHONE # OR EXTENSION #	830-249-9343 Ext. 240
TIME NEEDED FOR PRESENTATION	5 Minutes
WORDING OF AGENDA ITEM	Consideration and action on the approval of accounts payable claims for purchases, services and vendors.
REASON FOR AGENDA ITEM	To pay current accounts payable claims.
IS THERE DOCUMENTATION	Yes Financial Transparency Link / County Auditor Web Page
WHO WILL THIS AFFECT?	Departments that have AP claims
ADDITIONAL INFORMATION	None



KENDALL COUNTY COMMISSIONERS COURT AGENDA REQUEST

COMMISSIONER COURT DATE: 11/23/2015
OPEN SESSION

SUBJECT	Procedure for Vacancy of Office
DEPARTMENT & PERSON MAKING REQUEST	Darrel L. Lux, County Judge
PHONE # OR EXTENSION #	830-249-9343, ext 213
TIME NEEDED FOR PRESENTATION	5 minutes
WORDING OF AGENDA ITEM	Discussion concerning vacancy in office of Commissioner Precinct 4.
REASON FOR AGENDA ITEM	To explain the procedures in County government when an office is vacated due to death.
IS THERE DOCUMENTATION	No
WHO WILL THIS AFFECT?	The public
ADDITIONAL INFORMATION	None



KENDALL COUNTY COMMISSIONERS COURT AGENDA REQUEST

COMMISSIONER COURT DATE: 11/23/2015
OPEN SESSION

SUBJECT	Genealogical Society Research Computer & Software Equipment
DEPARTMENT & PERSON MAKING REQUEST	Linda Stephens, GSKC President Darrel L. Lux, County Judge
PHONE # OR EXTENSION #	830-249-9343, ext 213
TIME NEEDED FOR PRESENTATION	5 minutes
WORDING OF AGENDA ITEM	Discussion concerning the Memorandum of Agreement between the Genealogical Society of Kendall County (GSKC) and the Church of Jesus Christ of Latter Day Saints concerning the relocation of the Boerne, Texas, Family History Center to the GSKC Library at the Family History Place.
REASON FOR AGENDA ITEM	To discuss the proposed agreement from the GSKC who is a tenant on County property.
IS THERE DOCUMENTATION	Yes
WHO WILL THIS AFFECT?	The public.
ADDITIONAL INFORMATION	None

Memorandum of Agreement

between the Genealogical Society of Kendall County (GSKC) and the Church of Jesus Christ of Latter Day Saints (LDS Church) concerning the relocation of the Boerne, Texas Family History Center (FHC) to the GSKC Library (Family History Place - FHP)

1. This agreement can be terminated by either party with a 30-day notification.

2. Physical Move of the Equipment

a. The LDS Church will move and set up the equipment from the FHC in the Boerne building to the FHP. GSKC will clear space for the incoming equipment. Equipment to be moved will include the computers, printers, and microfilm reader from the FHC. Other equipment will be moved based on available space at the FHP, as agreed by both parties.

b. The LDS Church will coordinate with Salt Lake City to complete any software connections needed at the FHP. Software currently available on the FHC computers is listed at Exhibit A.

c. Any facility modifications that may be needed (power, lighting, etc) will be paid by the LDS Church, in coordination with GSKC.

3. FHC operation

a. The LDS Church will be responsible for maintaining the FHC equipment and providing custodial care for the designated FHC area at the FHP. Insurance claims for FHC equipment will be processed through the LDS Church. GSKC will continue to be responsible for maintaining the equipment, furniture, and books in the other rooms in the FHP.

b. The LDS Church will provide training to the GSKC volunteers on the computers and software available in the designated FHC area, plus FHC operating procedures. GSKC will provide training to the LDS volunteers on the FHP operating procedures.

c. GSKC will be responsible for manning the FHP/FHC during daytime hours (currently Mon 1-4, Tue-Fri 10-4). The LDS Church will be responsible for manning the FHP/FHC during nighttime and weekend hours (times TBD). Volunteers for either shift may be GSKC or LDS members.

d. Money collected for copies in the designated FHC area will be maintained and processed by the LDS Church. Other donations, unless otherwise specified, will be maintained and processed by GSKC.

e. The LDS Church will assign a church member as the Director of the FHC. The Director will be a non-voting advisor to the GSKC Board of Directors.

f. Utilities at the FHP, to include the FHC, will be paid by GSKC.

g. The FHC Director will have access to the FHP for special family history activities sponsored by the LDS Church. These activities will be coordinated with GSKC to avoid conflicts. GSKC personnel may be invited to these activities, either as guests, or as consultants to assist with the activity.

4. Miscellaneous

a. Equipment in the designated FHC area remains the property of the LDS Church.

b. The designated FHC area will follow standard LDS church policies. GSKC members and their friends will honor those policies (i.e. no coffee/tea or alcohol beverages in the designated FHC area).

President, GSKC

Director, FHC

Exhibit A

Software currently available on the FHC computers:

Ancestry.com – institution version

Fold3.com

19th Century British Library Newspaper Digital Archive

Alexander Street Press – American Civil War, Social and Cultural History, Women and Social Movements

Americanancestors.org

Findmypast – institutional version

The Genealogist

Godfrey Memorial Library

Create your "Who Do You Think You Are?" Story

Heritage Quest Online

Historic Map Works – library edition

Kinpoint

MyHeritage – library edition

Newspaperarchive.com

Paper Trail

ProQuest Obituary Listings

Puzzilla.org – premium services

World Vital Records

Source: <https://fhc.familysearch.org/resources.html>



KENDALL COUNTY COMMISSIONERS COURT AGENDA REQUEST

COMMISSIONER COURT DATE: 11/23/2015
OPEN SESSION

SUBJECT	Cast Votes for Kendall Appraisal District Board of Directors Candidate
DEPARTMENT & PERSON MAKING REQUEST	Darrel L. Lux, County Judge
PHONE # OR EXTENSION #	830-249-9343, ext. 213
TIME NEEDED FOR PRESENTATION	3 minutes
WORDING OF AGENDA ITEM	Consideration and action to approve the Resolution to cast Kendall County's votes for the County's nominee, Don Edmondson, to the Kendall Appraisal District Board of Directors.
REASON FOR AGENDA ITEM	To elect a candidate to provide County representation on the Kendall Appraisal District Board of Directors.
IS THERE DOCUMENTATION	Yes
WHO WILL THIS AFFECT?	Countywide
ADDITIONAL INFORMATION	Don Edmondson is currently the County representative and he has expressed an interest to continue to serve.

RESOLUTION 11-23-2015

COMMISSIONERS COURT
KENDALL COUNTY, TEXAS

A RESOLUTION CASTING THE VOTES FOR CANDIDATE, OR CANDIDATES, FOR THE BOARD OF DIRECTORS FOR THE KENDALL APPRAISAL DISTRICT, FOR 2016-2017:

WHEREAS, the Commissioners Court of Kendall County is required to cast its vote by written resolution for the candidate or candidates for the Board of Directors for the Kendall Appraisal District for 2016-2017;

THEREFORE, BE IT RESOLVED, that the Commissioners Court of Kendall County, Texas, hereby casts the votes as follows:

Don Edmondson 1,549

Passed and approved this 23rd day of November, 2015.

Darrel L. Lux, County Judge

Mike Fincke, Commissioner, Precinct 1

Richard W. Elkins, Commissioner, Precinct 2

Tommy Pfeiffer, Commissioner, Precinct 3

Vacant
Commissioner, Precinct 4

Attest:

Darlene Herrin, County Clerk



KENDALL COUNTY COMMISSIONERS COURT AGENDA REQUEST

COMMISSIONER COURT DATE: 11/23/2015
OPEN SESSION

SUBJECT	Burn Ban
DEPARTMENT & PERSON MAKING REQUEST	Darrel L. Lux, County Judge Jeffery Fincke, Fire Marshal
PHONE # OR EXTENSION #	830-249-9343, ext. 213
TIME NEEDED FOR PRESENTATION	3 minutes
WORDING OF AGENDA ITEM	Consideration and action on the burn ban (Authority Section 352.081, Texas Local Government Code).
REASON FOR AGENDA ITEM	To determine whether or not there is a need for a ban on burning
IS THERE DOCUMENTATION	No
WHO WILL THIS AFFECT?	Countywide
ADDITIONAL INFORMATION	None



KENDALL COUNTY COMMISSIONERS COURT AGENDA REQUEST

COMMISSIONER COURT DATE: 11/23/2015
OPEN SESSION

SUBJECT	Final Plat Cordillera Ranch Subdivision Unit 207B-2
DEPARTMENT & PERSON MAKING REQUEST	Development Management - Richard Tobolka
PHONE # OR EXTENSION #	830-249-9343 Ext. 250
TIME NEEDED FOR PRESENTATION	5 Minutes
WORDING OF AGENDA ITEM	Consideration and action on a Final Plat of Cordillera Ranch Subdivision Unit 207B-2, in accordance to section 203 of the 1990 Kendall County Regulations Rules and Specifications for Roads and Subdivisions. The subdivision consists of 4.39 acres, one residential lot and no new roads. The proposed subdivision will be served by central water and sewer. (David Hill, President, CRDEVCO 2013 LLC)
REASON FOR AGENDA ITEM	Creating Cordillera Ranch Subdivision Unit 207B-2
IS THERE DOCUMENTATION	Yes
WHO WILL THIS AFFECT?	Pct #2
ADDITIONAL INFORMATION	None

PROJECT
LOCATION

CLUBS DRIVE

NICKLAUS WAY

PARK RIDGE

CLUBS DRIVE

CORDILLERA TRACE

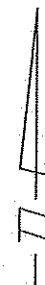
LANTANA

HOLLOW

BERGHEIM

TO BOERNE
S.H. 46

LOCATION MAP



LEGEND

- Original Patent Survey Line
- Indicates Building Setback Line
- (2.18 AC.) = Total coverage outside of Drainage Easement
- SP = Set 1/2" Iron pin with red cap stamped "MW Cude"
- FCS = Found Cotton Spindle
- P.R. = Plat Records of Kendall County
- S.B. = Building Setback

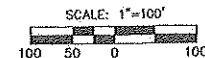
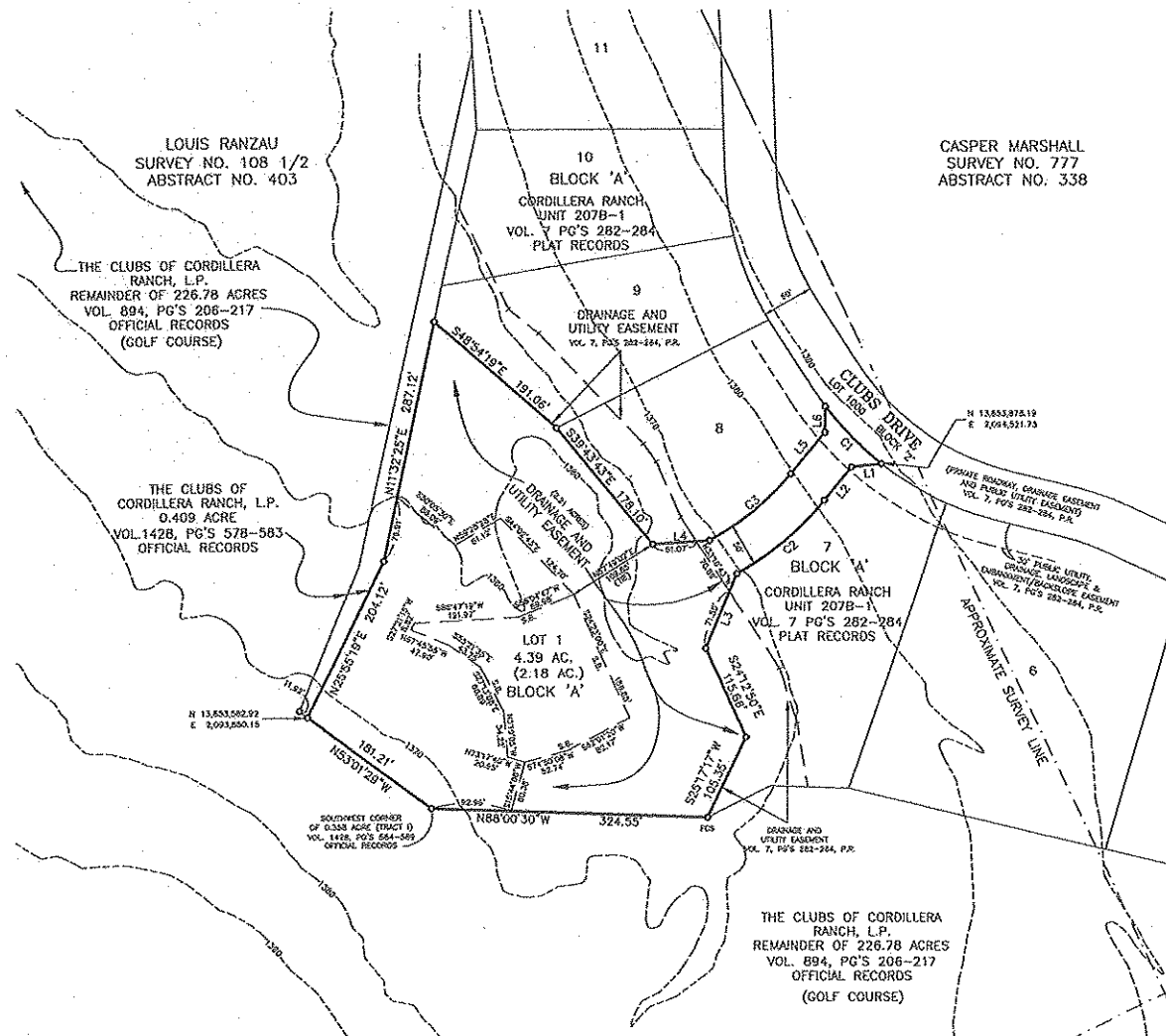
Note: All Lot 1, Block 'A' corners are found 1/2" Iron pins with red cap stamped "MW Cude" unless otherwise noted.


CURVE TABLE

CURVE	DELTA	RADIUS	LENGTH	TANGENT	CHORD BEARING	CHORD
C1	150°15'3"	380.00'	94.45'	47.50'	S44°18'01"E	94.17'
C2	21°36'48"	355.00'	133.51'	67.76'	S49°40'58"W	133.12'
C3	23°12'29"	305.00'	123.54'	62.63'	N59°28'47"E	122.78'

LINE TABLE

LINE #	BEARING	DISTANCE
L1	S83°31'42"W	35.14'
L2	S38°52'32"W	50.29'
L3	S22°44'12"W	94.16'
L4	N86°11'47"E	66.67'
L5	N38°52'32"E	62.25'
L6	N81°02'43"E	30.67'



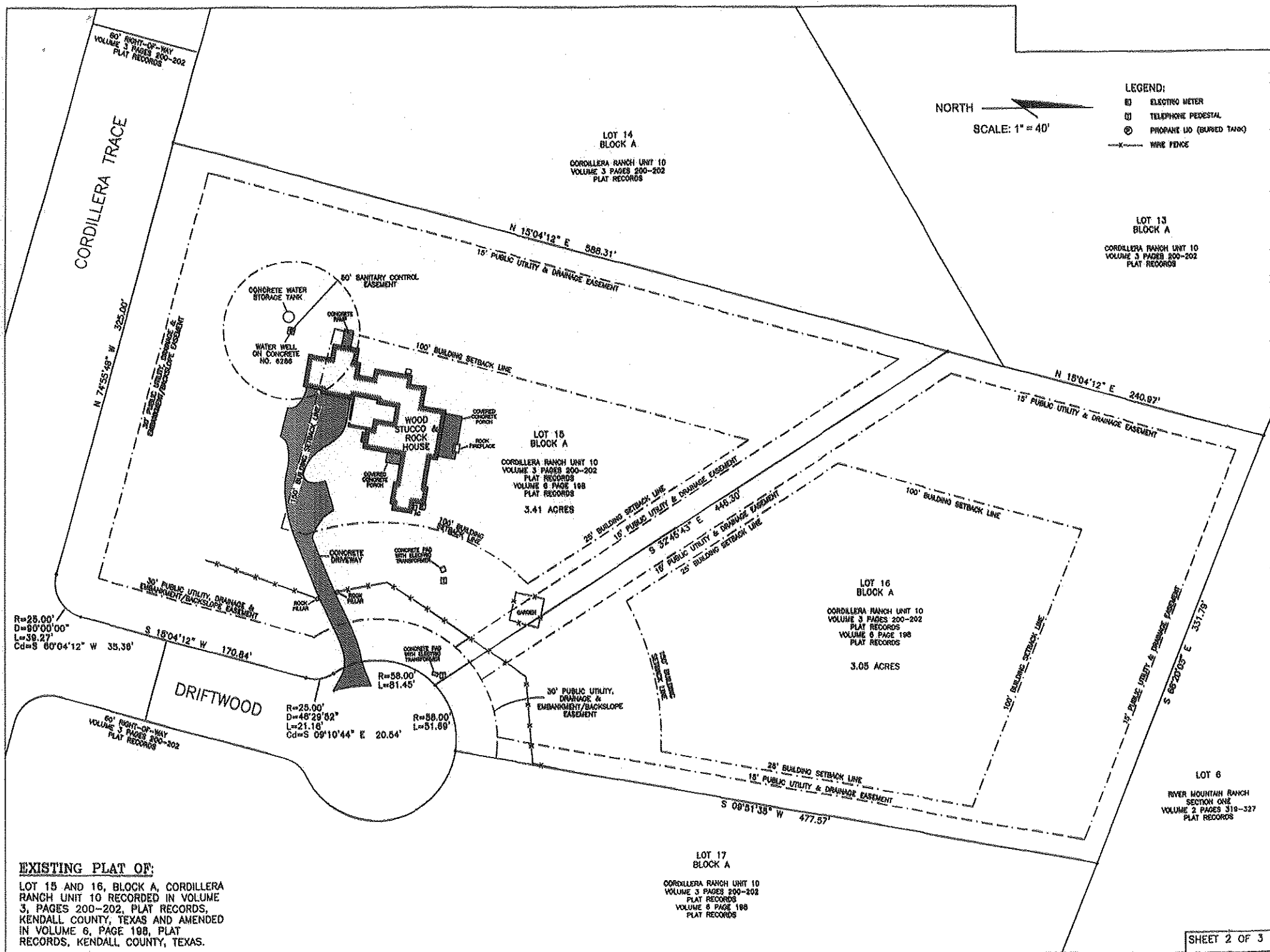

CUDE ENGINEERS
 4122 POND HILL RD., SUITE 101
 SAN ANTONIO, TEXAS 78221
 TEL 210.681.2551 • FAX 210.523.7112
 WWW.CUDEENGINEERS.COM
 T&PE REGISTERED ENGINEERING
 FIRM #555
 T&PELS No. 10045500

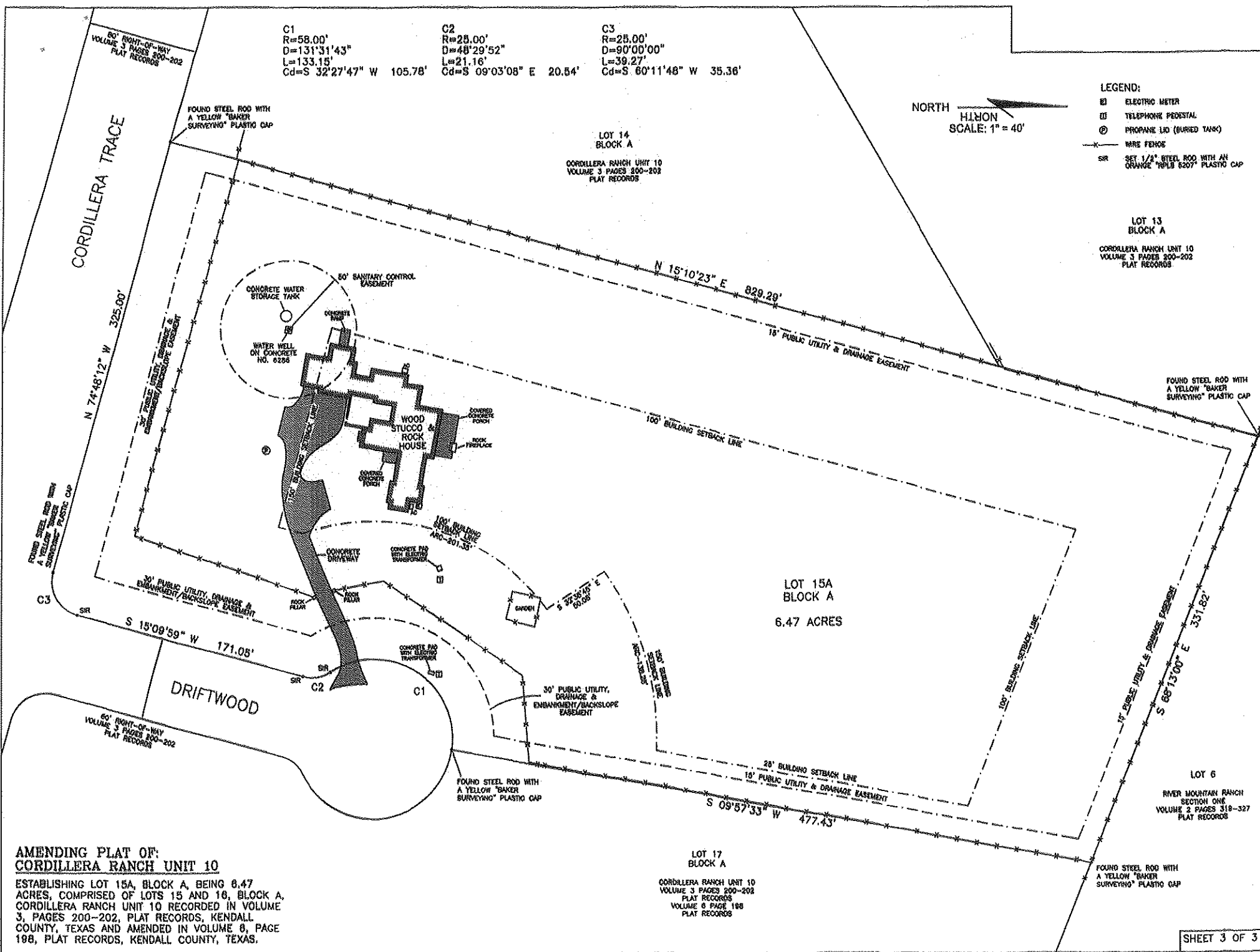


KENDALL COUNTY COMMISSIONERS COURT AGENDA REQUEST

COMMISSIONER COURT DATE: 11/23/2015
OPEN SESSION

SUBJECT	Amending Plat for lots 15 & 16, Block A, in Cordillera Ranch Unit 10
DEPARTMENT & PERSON MAKING REQUEST	Development Management - Richard Tobolka
PHONE # OR EXTENSION #	830-249-9343 Ext. 250
TIME NEEDED FOR PRESENTATION	5 Minutes
WORDING OF AGENDA ITEM	Consideration and action on an amending plat of lots 15 and 16, Block A, in Cordillera Ranch Subdivision Unit 10, Kendall County Texas in accordance to section 209 of the Kendall County Development Rules and Regulations. The purpose of the Amending Plat is to combine Lots 15 and 16 creating Lot 15A. (Barry G. and Alexis A. Cook)
REASON FOR AGENDA ITEM	Combining Lots 15 & 16 into Lot 15A in Cordillera Ranch Unit 10, Block A
IS THERE DOCUMENTATION	Yes
WHO WILL THIS AFFECT?	Pct #2
ADDITIONAL INFORMATION	None







KENDALL COUNTY COMMISSIONERS COURT AGENDA REQUEST

COMMISSIONER COURT DATE: 11/23/2015
OPEN SESSION

SUBJECT	Texas County and District Retirement System
DEPARTMENT & PERSON MAKING REQUEST	Human Resources Department, Juanita Espino, Human Resources Director
PHONE # OR EXTENSION #	830-249-9343 ext 600
TIME NEEDED FOR PRESENTATION	2 minutes
WORDING OF AGENDA ITEM	Consideration and action regarding the county's retirement plan for year 2016 under Texas County and District Retirement System.
REASON FOR AGENDA ITEM	Annual renewal
IS THERE DOCUMENTATION	Yes
WHO WILL THIS AFFECT?	All employees.
ADDITIONAL INFORMATION	None



Plan Assessment for Plan Year 2016
Kendall County – 229
Participation Date – 6/1/1982

It's that time of year again — time to look at your TCDRS retirement plan and decide whether or not your benefits meet your workforce needs and budget. This plan assessment will give you an overview of the benefits you provide as well as how much it will cost to provide these benefits in the upcoming plan year.

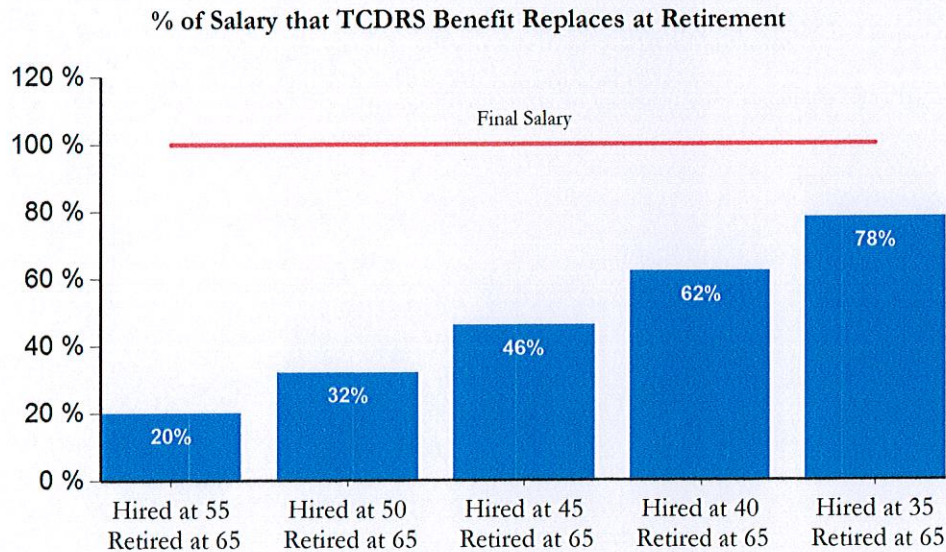
2016 Plan	
Basic Plan Options	
Employee Deposit Rate	7%
Employer Matching	150%
Prior Service Credit	125%
Retirement Eligibility	
Age 60 (Vesting)	8 years of service
Rule of	75 years total age + service
At Any Age	30 years of service
Optional Benefits	
Partial Lump-Sum Payment at Retirement	Yes
Group Term Life	None
Retirement Plan Funding	
Normal Cost Rate	5.40%
UAAL/(OAAL) Rate	1.97%
Required Rate	7.37%
Elected Rate	N/A
Total Contribution Rate	
Retirement Plan Rate (greater of required or elected rate)	7.37%
Group Term Life Rate	N/A
Total Contribution Rate	7.37%
Valuation Results (as of Dec. 31, 2014)	
Actuarial Accrued Liability	\$22,115,490
Actuarial Value of Assets	\$19,942,881
Unfunded Actuarial Accrued Liability	\$2,172,609
Funded Ratio	90.2%

Notes:

Buyback adopted 1991
 Last COLA 2007

What You Are Providing

The TCDRS benefit is based on employee deposits, which earn 7% compound interest each year, and employer matching at retirement. The following chart shows the estimated TCDRS benefit as a percentage of final salary prior to retirement for a new hire:

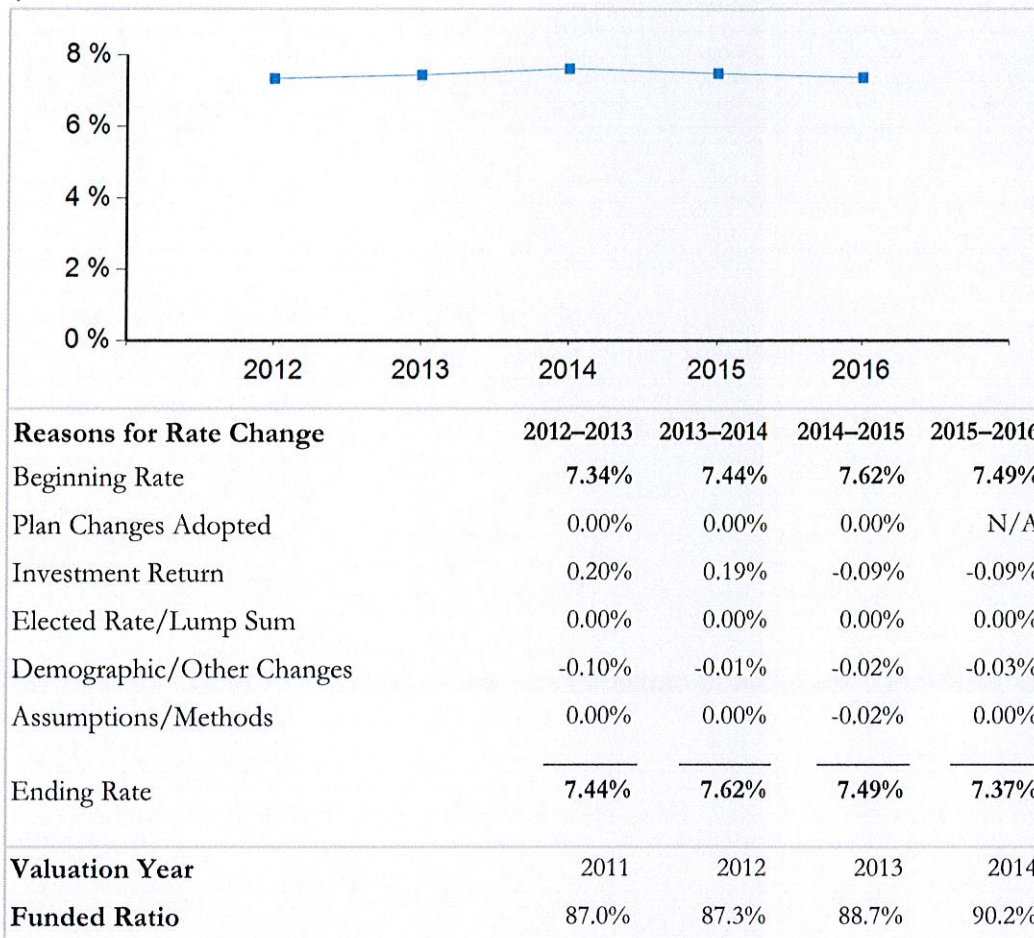


Assumptions

- Employees are new hires and will work for you until retirement.
- Your current plan provisions will remain in effect through employee's retirement.
- Current laws governing TCDRS will continue as they are.
- Graded salary scales give bigger raises early in careers, with smaller raises later in careers (see Summary Valuation Report at www.tcdrs.org/employer).
- Based on Single Life benefit.

Reasons for Rate Change

Below is a record of your required rate history for your retirement plan over the last five years.



A complete Summary Valuation Report for the Dec. 31, 2014 valuation will be available mid-May at www.tcdrs.org/employer.

Next Steps

If you are interested in making plan changes, please contact your Employer Services Representative at 800-651-3848. Your benefit selections are due by Dec. 15, 2015.



**KENDALL COUNTY COMMISSIONERS COURT
AGENDA REQUEST**

COMMISSIONER COURT DATE: 11/23/2015 OPEN SESSION	
SUBJECT	Assistant Fire Marshall & Fire Inspector Job Description
DEPARTMENT & PERSON MAKING REQUEST	Jeffery Fincke, Fire Marshal
PHONE # OR EXTENSION #	830 249-3721 ext. 451
TIME NEEDED FOR PRESENTATION	5 minutes
WORDING OF AGENDA ITEM	Consideration and action on approving the Job Description for the Assistant Fire Marshal and Fire Inspector.
REASON FOR AGENDA ITEM	Job Description for new person in the Fire Marshal's Office starting in April
IS THERE DOCUMENTATION	Yes
WHO WILL THIS AFFECT?	Countywide, new construction, fire investigations, inspections and County Fire Departments.
ADDITIONAL INFORMATION	Position has been budgeted to start April 2016.

KENDALL COUNTY CLASS SPECIFICATION

ASSISTANT COUNTY FIRE MARSHAL/INVESTIGATOR

Grade:

GENERAL SUMMARY

Under general supervision, the purpose of this position is to assist the County Fire Marshal in various tasks. Employees in this classification are responsible for inspecting buildings as required by state and county code, and for providing consultation and information to fire service personnel and builders regarding laws, rules, regulations and department policy relating to fire safety.

EXAMPLES OF ESSENTIAL FUNCTIONS

Duties may include but are not limited to the following:

Assist the Fire Marshal in planning, organizing and coordinating the County Fire Prevention Program and public fire education programs.

Respond to major fires; conduct investigations and analysis to determine origin and cause of fires; prepares analytical report to reveal findings.

Conduct inspections of buildings and other structures for compliance of State and/or County Fire Codes.

Prepare inspection records and correspondence pertaining to violations and recommendations.

Review plans for fire code compliance and conduct inspections for installation of sprinkler systems; heat activated alarm systems and other fire protection devices and equipment.

Inspect industrial occupancies, flammable liquid tanks and hazardous material operations, blasting operations before and after detonation and vapor recovery systems.

Authorize and issue permits for agricultural burning, tank installation, tank removal, air support structures, tent/canopy, miscellaneous burning and special events.

In the event of major fires or emergencies, may be required to report to duty for an extended period of time.

Perform duties as assigned or required by the Fire Marshal and/or Commissioners Court.

Assume duties of the Fire Marshal in his or her absence.

EXPERIENCE AND TRAINING

Possess a high school diploma or GED equivalent.

LICENSES AND CERTIFICATIONS

Valid Class C Texas Driver's License

Certified by Texas Commission on Fire Protection as a Certified Fire Inspector Basic including Plans Review

Certified by Texas Commission of Fire Protection as a Certified Fire & Arson Investigator Basic

Certified by Texas Commission of Law Enforcement Officers Standards and Education as a Basic Peace Officer

KNOWLEDGE, SKILLS AND ABILITIES

Knowledge of:

- Fire codes as stated by local, state, and federal laws.
- Firefighting equipment functions.
- Modern office procedures and equipment.
- Correct English usage and grammar.

Ability to:

- Utilize various advisory and design data and information.
- Communicate verbally and in writing so as to allow comprehension by receiving party.
- Work independently and exercise sound judgement.
- Promote and present a positive image as a Fire Prevention Professional in appearance and demeanor and set an example of a leader for the community.
- Maintain current Continuing Education requirements set by Texas Commission of Fire Protection and Texas Commission on Law Enforcement Officers Standards and Education.

Assistant to County Fire Marshall Class Specification
KENDALL COUNTY

- Understand and exchange information with supervisors and co-workers when receiving assignments and instructions.
- Communicate and interact with the general public, attorneys, judges, and courts.
- Follow safe work practices including workplace safety policies and procedures.
- Walk, stand, sit, kneel, push, stoop, crawl, twist, reach above the shoulder, grasp, pull, bend repeatedly, climb stairs and ladders.
- Use radio equipment.
- Exert moderate physical work in an outside environment with various weather conditions.

Kendall County is an Equal Opportunity Employer and maintains compliance with the Americans with Disabilities Act by providing reasonable accommodations to qualified individuals and employees with disabilities.



KENDALL COUNTY COMMISSIONERS COURT AGENDA REQUEST

COMMISSIONER COURT DATE: 11/23/2015 OPEN SESSION	
SUBJECT	Assistant to the Fire Marshals Office
DEPARTMENT & PERSON MAKING REQUEST	Jeffery Fincke, Fire Marshal
PHONE # OR EXTENSION #	830 249-3721 ext. 451
TIME NEEDED FOR PRESENTATION	5 minutes
WORDING OF AGENDA ITEM	Consideration and action to begin the hiring process for the new Assistant Fire Marshal, Fire Inspector.
REASON FOR AGENDA ITEM	This is a new position to begin in April 2016.
IS THERE DOCUMENTATION	No
WHO WILL THIS AFFECT?	Fire Marshal's Office
ADDITIONAL INFORMATION	Was budgeted for to begin in April 2016.



KENDALL COUNTY COMMISSIONERS COURT AGENDA REQUEST

COMMISSIONER COURT DATE: 11/23/2015 OPEN SESSION	
SUBJECT	Drug and Alcohol Policies
DEPARTMENT & PERSON MAKING REQUEST	Commissioner Mike Fincke
PHONE # OR EXTENSION #	830-249-9343 Ext 370
TIME NEEDED FOR PRESENTATION	2 minutes
WORDING OF AGENDA ITEM	Consideration and action to approve the corrections made to the following policies: 9.01 Drug and Alcohol - All Employees and 9.02 Drug and Alcohol Commercial Motor Vehicle Drivers.
REASON FOR AGENDA ITEM	Corrections
IS THERE DOCUMENTATION	Yes
WHO WILL THIS AFFECT?	County employees
ADDITIONAL INFORMATION	None

9.00 DRUG-FREE WORKPLACE

9.01 DRUG AND ALCOHOL POLICY – ALL EMPLOYEES

POLICY STATEMENT

Kendall County considers the safety and health of its employees to be of utmost importance. Use of alcoholic beverages and drugs can pose a serious threat to an employee's health and safety. It is the policy of the County to prevent substance use or abuse from having an adverse effect on County employees and others.

APPLICABILITY

This policy applies to all employees of Kendall County regardless of rank or position.

DEFINITIONS

Driver – any person who operates a motor vehicle, and for the purposes of this policy, any employee who is required to acquire, possess, and/or maintain a Texas Driver's License.

Safety-sensitive Function – means the time an employee begins to work or is required to be in readiness for work and continues until the time they are relieved from work and all responsibilities related to their job are completed.

County Premises or County Property – includes, but is not limited to, all buildings, offices, facilities, grounds, parking lots, lockers, places, equipment and vehicles owned, leased, or managed by Kendall County, or at any site where Kendall County is conducting business.

Illegal Drug – means any drug in any detectable amount:

- a) which is not legally obtainable, or;
- b) a prescribed drug not being used for the prescribed purpose or not being used in accordance with the prescription, or;
- c) over-the-counter drugs being used at a dosage level different than that recommended by the manufacturer.

Alcohol – means an intoxicating agent in beverage alcohol, ethyl alcohol, or other low molecular weight alcohols including methyl and isopropyl alcohol.

Drug Paraphernalia – includes a product or material that is used or intended for use in introducing into the human body an illegal drug, or that is used for concealing illegal drugs.

Under the Influence – means a breath alcohol concentration of .02 or greater, or a confirmed positive drug test result for illegal drugs under this policy. In addition, it includes the misuse of legal drugs where there is not a valid prescription from a physician for the lawful use of a drug in the course of medical treatment or use of such drugs in violation of prescribed conditions. It also includes actions, appearance, speech, or bodily odors that indicate the employee's lack of normal mental or physical faculties, which would reasonably cause a supervisor to conclude that such employee is impaired because of alcohol or drug use.

Medical Review Officer (MRO) – means a licensed M.D. or D.O. or approved testing facility with knowledge of drug abuse disorders that is employed, contracted with, or used by Kendall County to conduct drug and alcohol testing in accordance with this policy.

PROHIBITIONS:

Persons working in their capacity as a Kendall County employee or operating any Kendall County vehicle or equipment, or present on Kendall County property or premises, or conducting Kendall County-related business off-site, are prohibited from:

- The use, possession, manufacture, distribution, dispensing, sale, or purchase of an illegal drug (including possession of drug paraphernalia);
- The possession or consumption of alcohol;
- Being under the influence of alcohol or illegal drugs. Employees should report to work fit for duty and free of any effects of illegal drugs or alcohol;
- The unauthorized use or possession of prescription or over-the-counter drugs.

PRESCRIBED MEDICATIONS

Employees taking prescription medications shall be required to notify their supervisor of any possible effects the medication might have regarding their job performance and physical/mental capacity. Any information concerning prescription medication being used by an employee, and any other medical information of which the supervisor becomes aware, shall be treated as confidential information. Prescription medications used at work are to be kept in their original container.

If a covered employee fails a drug or alcohol test, the county may terminate the employee. Employees having problems with drugs or alcohol are encouraged to seek treatment from qualified professionals or contact EAP Services (See 2.02 EAP Services). Information on benefits provided for treatment of alcohol and drug problems is available in the Human Resources Department.

REQUIRED TESTING:

- **Pre-Employment:** This test is required and negative results must be received before a person is employed by the County. Applicants will be required to pass a drug test after receiving a conditional offer of employment. Refusal to submit to pre-employment drug testing, or a positive result from such testing, will disqualify the applicant from employment.
- **Random:** For vehicle operator positions requiring a **commercial driver's license**, the county is required to perform unscheduled, random tests of covered employees at a rate of 50 percent of the total number of covered positions per year for drugs and 10 percent for alcohol.

- **Reasonable Suspicion:** Employees are subject to testing based upon observations by their supervisor(s) which lead them to suspect drug and/or alcohol use or impairment. Reasonable Suspicion determinants and checklist are found in **Appendix A** of this policy. These determinants and the checklist will be reviewed by the employee's supervisor, and if such observations indicate the need for testing, the supervisor will notify the employee's Department Head. The Department Head shall notify the Human Resources Director who shall make arrangements for the subject employee to be tested for the presence of drugs or alcohol.
- **Post-Accident/Incident:** This test must be administered to all employees who, while operating a motor vehicle in performance of county business:
 1. Are cited for moving violation(s) arising from an accident/incident that requires a vehicle to be towed; or
 2. Are cited for moving violation(s) arising from an accident/incident which results in an injury requiring medical attention away from the scene; or
 3. Are involved in a vehicular accident/incident which results in fatality.

The investigation and testing required in such instances must occur within two (2) hours of the accident or incident requiring the testing. The Human Resources Director is responsible for scheduling testing. A person subject to post-accident/incident testing must remain available for testing. Failure to remain available shall be considered as a refusal to test. The supervisor and/or Department Head of the subject employee is responsible for making sure that the person is timely tested, is taken to the testing location and returned to county premises or their residence after testing is conducted. Under no circumstances will the employee be allowed to drive himself/herself to the testing facility.

- **Return-to-Duty and Follow Up:** Employees who have tested positive for drugs and/or alcohol or have refused to take a drug or alcohol test, must submit to return-to-duty testing and receive negative test results before the employee may resume regular duties. Referral, evaluation, and treatment requirements must be met. Follow-up testing is required for employees who have tested positive for drugs and/or alcohol. Testing will be unannounced and at least six (6) tests must be conducted in the first year following return to duty. Additional unannounced tests will be required during the second year after returning to work following a positive test result. Follow-up testing may be extended for up to 60 months as recommended by a substance abuse professional. Employees waive any right to contest termination resulting from a subsequent positive test.

TESTING PROCEDURES:

- 1) Tests will be conducted under this Policy in a manner consistent with regulations established and in place by the Federal Motor Carrier Safety Administration.
- 2) Kendall County has contracted with a provider to perform alcohol and drug testing. The provider will provide access to the Medical Review Officer (MRO) for any employee who receives a positive test result and the employee will be given the opportunity to discuss the test with the MRO, to rebut or explain the results.

- 3) Confirmed positive test results and any related information shall be communicated by the MRO to the Human Resources Director. The Human Resources Director will be responsible for contacting the employee's Department Head to review the situation and provide guidance as needed.
- 4) Information and records relating to positive test results, drug and alcohol dependencies, and legitimate medical explanations provided to the MRO shall be kept confidential to the extent required by law, and maintained in secure files separate from normal personnel files. Such records and information may be disclosed among management and supervisors on a need-to-know basis, and may also be disclosed where relevant to a grievance, charge, claim or other legal proceeding initiated by or on behalf of an employee or applicant.
- 5) Kendall County, through the Human Resources office, will advise employees who have received a confirmed positive test of the available resources for evaluation and treatment, including names, addresses, and telephone numbers of substance abuse professionals, counseling centers, and treatment programs. Kendall County is not required to pay for rehabilitation or to hold a job open for an employee who is participating in a rehabilitation program.

ENFORCEMENT:

Employees who violate this policy are subject to disciplinary action up to and including termination of employment.

9.02 DRUGS AND ALCOHOL - COMMERCIAL MOTOR VEHICLE DRIVERS

POLICY STATEMENT

Kendall County considers the safety and health of its employees to be of utmost importance. Use of alcoholic beverages and drugs can pose a serious threat to a person's health and safety. It is the policy of the County to prevent substance use or abuse from having an adverse effect on County employees and others.

APPLICABILITY

This policy reflects the County's compliance with the Department of Transportation's (DOT) Employee Alcohol and Controlled Substance Testing Requirements under the rules of the Omnibus Transportation Employee Testing Act of 1991. This policy applies to all employees of Kendall County regardless of rank or position, who are required to acquire, possess, and/or maintain a Commercial Driver's License (CDL) as a condition of employment.

DEFINITIONS

Commercial Motor Vehicle (CMV) – A motor vehicle or combination of motor vehicles used to transport passengers or property if the vehicle:

- has a gross combination weight rating of 26,001 or more pounds (including a towed unit with a gross vehicle weight rating of more than 10,000 pounds); or
- has a gross vehicle weight rating of 26,001 or more pounds; or
- is designed to transport 16 or more passengers, including the driver; or
- is of any size and is used in the transportation of a placard amount of hazardous materials.

Driver – is any person who operates a commercial motor vehicle (CMV), including full-time, regularly employed drivers; casual, intermittent, or occasional drivers; and leased drivers or independent owner-operator contractors; and for the purposes of this policy, any County employee who is required to acquire, possess, and/or maintain a Commercial Driver's License (CDL).

Safety-sensitive Function – means the time from the time a driver begins to work or is required to be in readiness for work, until the time they are relieved from work and all responsibilities for performing work.

County Premises or County Property – includes, but is not limited to, all buildings, offices, facilities, grounds, parking lots, lockers, places and vehicles owned, leased, or managed by Kendall County, or at any site on which Kendall County is conducting business.

Illegal Drug – means any drug in any detectable amount:

- a) which is not legally obtainable, or;
- b) a prescribed drug not being used for the prescribed purpose, or;
- c) over-the-counter drugs being used at a dosage level different than recommended by the manufacturer.

Alcohol – means an intoxicating agent in beverage alcohol, ethyl alcohol, or other low molecular weight alcohols including methyl and isopropyl alcohol.

Drug Paraphernalia – includes a product or material that is used or intended for use in introducing into the human body an illegal drug, or that is used for concealing illegal drugs.

Under the Influence – means a breath alcohol concentration of .02 or greater, or a confirmed positive drug test result for illegal drugs under this policy. In addition, it includes the misuse of legal drugs where there is not a valid prescription from a physician for the lawful use of a drug in the course of medical treatment or use of such drugs in violation of prescribed conditions. It also includes actions, appearance, speech, or bodily odors that indicate the employee's lack of normal mental or physical faculties, which would reasonably cause a supervisor to conclude that such employee is impaired because of alcohol or drug use.

Medical Review Officer (MRO) – means a licensed M.D. or D.O. or approved testing facility with knowledge of drug abuse disorders that is employed, contracted with, or used by Kendall County to conduct drug and alcohol testing in accordance with this policy.

PROHIBITIONS:

Employees working in their capacity as a Kendall County employee or operating any Kendall County vehicle or equipment, or present on Kendall County property or premises, or conducting Kendall County-related business off-site, are prohibited from:

- The use, possession, manufacture, distribution, dispensing, sale, or purchase of an illegal drug (including possession of drug paraphernalia);
- The possession or consumption of alcohol;
- Being under the influence of alcohol or illegal drugs. Employees should report to work fit for duty and free of any effects of illegal drugs or alcohol;
- The unauthorized use or possession of prescription or over-the-counter drugs.

PRESCRIBED MEDICATIONS

Employees taking prescription medications shall be required to notify their supervisor of any possible effects the medication might have regarding their job performance and physical/mental capacity. Any information concerning prescription medication being used by an employee, and any other medical information of which the supervisor becomes aware, shall be treated as confidential information. Prescription medications used at work are to be kept in their original container.

If a covered employee fails a drug or alcohol test, the county may terminate the employee. Employees having problems with drugs or alcohol are encouraged to seek treatment from qualified professionals or contact EAP Services (See 2.02 EAP Services). Information on benefits provided for treatment of alcohol and drug problems is available in the Human Resources Department.

REQUIRED TESTING:

- **Pre-Employment:** This test is required and negative results must be received before an employee is allowed to perform a safety-sensitive function. Applicants will be required to pass a drug test after receiving a conditional offer of employment. Refusal to submit to pre-employment drug testing, or a positive result from such testing, will disqualify the applicant and another candidate will be selected.
- **Random:** This unannounced testing is based on a random selection of drivers. The selection must be made by a scientifically valid method and all drivers covered by this policy must have an equal chance of being tested. The names of drivers who are selected for testing must be kept confidential until such time that the County notifies the driver to take the test. Once the driver is notified, he/she must immediately proceed to the testing location and undergo testing. Random alcohol testing is also required; however random alcohol tests must be administered just prior to a driver performing a safety-sensitive function, while performing a safety-sensitive function, or just after performing a safety-sensitive function.
- **Reasonable Suspicion:** Employees are subject to testing based upon observations by their supervisor(s) which lead them to suspect drug and/or alcohol use or impairment. Reasonable Suspicion determinants and checklist are found in **Appendix A** of this policy. These determinants and the checklist will be reviewed by the employee's supervisor, and if such observations indicate the need for testing, the employee's Department Head will be notified, and arrangements will be made by the Safety Committee Chairperson or Human Resources Director for a drug and/or alcohol test for the involved employee. Under no circumstances will the employee be allowed to drive him/herself to the testing facility. The employee will not be allowed to return to work until the results of the test are available for review by the County's designated Medical Review Officer.
- **Post-Accident/Incident:** This test must be administered to all drivers who, while operating a motor vehicle in performance of county business:
 1. Are cited for moving violation(s) arising from an accident/incident that requires a vehicle being towed; or
 2. Are cited for moving violation(s) arising from an accident/incident which results in an injury requiring medical attention away from the scene; or
 3. Are involved in a vehicular accident/incident which results in fatality.

The investigation and testing required in such instances must occur within two (2) hours of the accident or incident requiring the testing. A person subject to post-accident/incident testing must remain available for testing. Failure to remain available shall be considered as a refusal to test. Under no circumstances will the employee be allowed to drive himself/herself to the testing facility. The person's supervisor is responsible for making sure that the person is timely tested, is taken to the testing location and returned to county premises or their residence after testing is conducted.

- **Return-to-Duty and Follow Up:** Drivers who have tested positive for drugs and/or alcohol, or have refused to take a drug or alcohol test, must submit to return-to-duty testing and receive negative test results before the employee may resume regular duties. Referral, evaluation, and treatment requirements must be met. Follow-up testing is required for drivers who have tested positive for drugs and/or alcohol. Testing will be unannounced and at least six (6) tests must be conducted in the first year following return to duty. Additional unannounced tests will be required during the second year after returning to work following a positive test result. Follow-up testing may be extended for up to 60 months as recommended by a substance abuse professional. Employees waive any right to contest termination resulting from a subsequent positive test.

TESTING PROCEDURES:

- 1) Drivers will be tested under this Policy in a manner consistent with regulations established and in place by the Federal Motor Carrier Safety Administration.
- 2) The provider Kendall County has contracted to perform DOT-compliant alcohol and drug testing will provide access to their Medical Review Officer (MRO) for any driver who receives a positive test result. Drivers with confirmed positive test results will have the opportunity to discuss the test with the MRO, to rebut or explain the results.
- 3) Confirmed positive test results and any related information shall be communicated by the MRO to the Human Resources Director. The Human Resources Director will be responsible for contacting the employee's Department Head to review the situation and provide guidance as needed. A positive test result for alcohol or an illegal drug will result in disciplinary action, up to and including termination.
- 4) Information and records relating to positive test results, drug and alcohol dependencies, and legitimate medical explanations provided to the MRO shall be kept confidential to the extent required by law, and maintained in secure files separate from normal personnel files. Such records and information may be disclosed among management and supervisors on a need-to-know basis, and may also be disclosed where relevant to a grievance, charge, claim or other legal proceeding initiated by or on behalf of an employee or applicant.
- 5) Under DOT-compliant policy, Kendall County is required to advise drivers who have received a confirmed positive test of the available resources for evaluation and treatment, including names, addresses, and telephone numbers of substance abuse professionals, counseling centers, and treatment programs. Kendall County is not required to pay for rehabilitation or to hold a job open for an employee, with or without pay.

ENFORCEMENT:

Employees who violate this policy are subject to disciplinary action up to and including termination of employment.



KENDALL COUNTY COMMISSIONERS COURT AGENDA REQUEST

COMMISSIONER COURT DATE: 11/23/2015 OPEN SESSION	
SUBJECT	Interlocal agreement
DEPARTMENT & PERSON MAKING REQUEST	GIS/Development Mgt. Mike Howle/ Rick Tobolka
PHONE # OR EXTENSION #	830-249-9343 Ext:302 Direct - 830-331-8245
TIME NEEDED FOR PRESENTATION	5 minutes
WORDING OF AGENDA ITEM	Presentation and discussion on executing an interlocal agreement with CAPCOG (Capitol Area Planning Council of Gov.) to provide software for permitting through Development Management.
REASON FOR AGENDA ITEM	Implement new software for Permitting i.e. Septic, driveway, development
IS THERE DOCUMENTATION	Yes
WHO WILL THIS AFFECT?	Development Management
ADDITIONAL INFORMATION	Cost is \$500.00 per month to be paid for though line item 10-541-54523 "Software maintenance"

MyGovernmentOnline.or

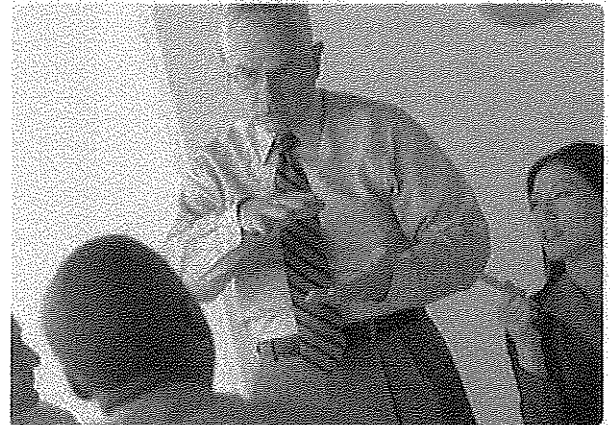
[Home](#)[Contact](#)[Help](#)

Will You Partner With Us?

We are an Economic Development District (EDD)
(commonly called COGS or Planning Districts)
established in 1978 under Federal and State law.

Who We Are

To understand why we do what we do and how we are able to do it, you must understand this; we are not a private company. We are an Economic Development District (EDD) (commonly called COGS or Planning Districts) that was established in 1978 under federal and state law. Entities, like ourselves, were created to help governmental entities come together and better share and utilize their resources to serve the public. As it is with any governmental entity, we do not have shareholders or private investors. We are audited quarterly to insure fiscal responsibility and our board is made up entirely of local politicians and their representatives from our assigned member jurisdictions. We exist to serve the public and fellow governmental agencies to bridge the gap in services when requested.



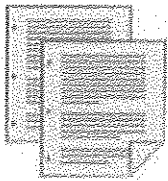
Owners

We have partnered with many jurisdictions to build a central portal of common government information that is of interest to you without any access charges. We have a dedicated team that constantly works to improve this portal and bring on more



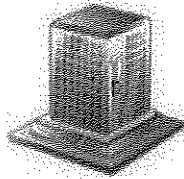
jurisdiction partners to better serve you. We want this to be YOUR portal, and we want it to serve you in the ways you need it to. Please give us a call or e-mail your thoughts on what is working well for you and ideas on how we can improve how this information is provided to you. We want to work together with you to build the best government information portal available. Thank you for your help.

The MyGovernmentOnline customer portal has a number of areas of interest, all with different tools to allow you to retrieve and manage information. Some of the information is available unrestricted. Other more sensitive information requires a free verified account that you can sign up for from the site. Examples include:



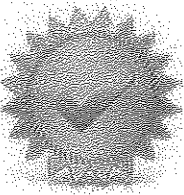
Permitting

Download permit type data, apply for permits online, request inspections, download your plan review and inspection reports, and see the status in real time of your permit.



Citizen Solution Center

Report tall grass, highway damage, and abandoned vehicle type problems. Track the status of their inspection and resolution time by the responsible agency.



Addressing

Check if you address is fully recognized and verified by your jurisdiction. Apply for a new address.



Other

There are many other options currently available, and we are always working with your partners to make more information available. See the main page for a full description of what is available.

Jurisdictions

As a fellow governmental entity, we perform many of the same functions for our designated areas just as you do. We have an in-house permit office with certified building officials, certified plan reviewers, and inspectors. We offer many economic development programs, as well as CDBG responsibilities. In short, we have a firsthand understanding of the

challenges and responsibilities when meeting the expectations of the public and local elected politicians who demand results. In 2005, after comparing the governmental software the private sector had to offer our member jurisdictions' unique needs, we made a strategic decision to begin building our own software products. Private sector offerings had many solid products and did what was advertised, but they were not configurable enough to accommodate the many different, and often changing, business practices of our jurisdictions. We decided to build a suite of software tools that are integrated and easily evolve. Due to the software's success and popularity in our own region, we have been offering these tools through a special partnership program to any governmental entity that is interested in participating. There is no upfront cost to acquire and use any of these tools; however, a small monthly fee is required to cover the cost of the ongoing support, training, and configuration that is provided for the lifetime that you use our products. Please contact us for further information regarding this program and how we can partner together to meet your software needs.

MyGovernmentOnline.org

2014 Rate Sheet

Permit Volume	Overage	Permits	Planning & Zoning	Code Enforcement	Addressing/ GIS Integration
MyPermitNow.org			MyProjectNow.org		
0-100	\$10.00	\$56.25	\$50.00	\$50.00	\$230.00
101-500	\$10.00	\$260.42	\$156.25	\$50.00	\$230.00
501-1,000	\$10.00	\$500.00	\$300.00	\$75.00	\$230.00
1,001-2,000	\$10.00	\$958.33	\$575.00	\$143.75	\$230.00
2,001-4,000	\$10.00	\$1,833.33	\$1,100.00	\$275.00	\$230.00
4,001-6,000	\$10.00	\$2,500.00	\$1,500.00	\$375.00	\$230.00
6,001-8,000	\$10.00	\$3,166.67	\$1,900.00	\$475.00	\$230.00
8,001-10,000	\$10.00	\$3,750.00	\$2,250.00	\$562.50	\$230.00
10,001-12,000	\$10.00	\$4,250.00	\$2,550.00	\$637.50	\$230.00
12,001-14,000	\$10.00	\$4,666.67	\$2,800.00	\$700.00	\$230.00
14,001-16,000	\$10.00	\$5,000.00	\$3,000.00	\$750.00	\$230.00
16,001-18,000	\$10.00	\$5,250.00	\$3,150.00	\$787.50	\$230.00
18,001-30,000	\$0.00	\$5,416.67	\$3,250.00	\$812.50	\$230.00

*Jurisdictions with a permit volume greater than 30,000 a year require a custom quote.

**Multi-year contract's flat, monthly fees may be subject to annual CPI changes.

Other Costs

- **On-Site Visits:** Reimbursement of lodging, transportation, and meals.
- **Integration for online credit card or ACH transactions:** Existing Credit Card Vendor: \$100.00 one-time fee; New Credit Card Vendor: \$500.00 one-time fee.
- **Historic Data Imports:** Imports requiring 20 hours of staff time or less, free of charge; Imports requiring more than 20 hours are subject to a custom quote.

Additional Modules

- Reoccurring Septic Permits, Fire Marshal, and Public Works modules available by custom quote.
- GPS Vehicle and Asset Tracking Software. Comes integrated with work order system and vehicle maintenance module.

Flat Monthly Fee Covers the Following Costs and Services

- Multi-site, real-time backup.
- Automatic phone and e-mail notifications.
- Experienced software analysts will be available to address software training, customizations, and issue resolutions as needed.
- Development and release of new features, as available.
- On-going customizations and setup specific to your jurisdiction, within present capabilities of software.
- Indefinite storage of photos, building/permitting documents, inspection reports and plan review files.
- Custom reports by request within present capabilities of software.
- Mobile, offline capably, field inspection and reporting software (InpsectionAnywhere).
- Phone and e-mail support services for jurisdiction and permit customer portals.



KENDALL COUNTY COMMISSIONERS COURT AGENDA REQUEST

COMMISSIONER COURT DATE: 11/23/2015

OPEN SESSION

SUBJECT	Letter of Permission for TABC for Christmas in Comfort Event
DEPARTMENT & PERSON MAKING REQUEST	Lauren Conklin, Marketing Manager, Singing Water Vineyards Darrel L. Lux, County Judge
PHONE # OR EXTENSION #	210-867-3094
TIME NEEDED FOR PRESENTATION	2 minutes
WORDING OF AGENDA ITEM	Consideration and action on a letter of permission from Commissioners Court to Singing Water Vineyards for permission to serve alcohol at their booth on 7th Street during the Christmas in Comfort event on Saturday, November 28, 2015 from 10:00 a.m. to 9:00 p.m.
REASON FOR AGENDA ITEM	The Texas Alcoholic Beverage Commission (TABC) requires a letter of permission from the County allowing the sale of alcohol at the booth on 7th Street.
IS THERE DOCUMENTATION	No
WHO WILL THIS AFFECT?	Precinct 4
ADDITIONAL INFORMATION	7th Street will be closed for the event.



KENDALL COUNTY COMMISSIONERS COURT AGENDA REQUEST

COMMISSIONER COURT DATE: 11/23/2015 OPEN SESSION	
SUBJECT	Monthly Status Report Herff Road Phase II
DEPARTMENT & PERSON MAKING REQUEST	Development Management - Richard Tobolka
PHONE # OR EXTENSION #	830-249-9343 Ext. 250
TIME NEEDED FOR PRESENTATION	5 Minutes
WORDING OF AGENDA ITEM	Monthly Status Report Herff Road Phase II
REASON FOR AGENDA ITEM	Monthly Status Report Herff Road Phase II
IS THERE DOCUMENTATION	No
WHO WILL THIS AFFECT?	Countywide
ADDITIONAL INFORMATION	None



KENDALL COUNTY COMMISSIONERS COURT AGENDA REQUEST

COMMISSIONER COURT DATE: 11/23/2015 OPEN SESSION	
SUBJECT	Summary of the October Road Report.
DEPARTMENT & PERSON MAKING REQUEST	Road and Bridge: Ricky Pfeiffer , Road Supervisor.
PHONE # OR EXTENSION #	830-249-9343, ext 656
TIME NEEDED FOR PRESENTATION	5 Minutes
WORDING OF AGENDA ITEM	Give a summary of the road activities for October.
REASON FOR AGENDA ITEM	Report the progress of road work.
IS THERE DOCUMENTATION	Yes.
WHO WILL THIS AFFECT?	County wide progress report.
ADDITIONAL INFORMATION	None.



Kendall County Road & Bridge Monthly Report October 2015

Route	Address	Location	Activity	Details	W.O. No	Date
Precinct	1					
Contractor Work						
CEDAR PL	411		Pothole Repair; Contractor	Repair potholes and shoulders.	RD-3125-15	10/20/15
DODGE RD		#5, 29, 31, 48.	Pothole Repair; Contractor	Repair potholes and shoulders.	RD-3123-15	10/20/15
LIVE OAK PASS	108		Pothole Repair; Contractor	Repair potholes and shoulders.	RD-3127-15	10/20/15
SKYVIEW DR	101		Pothole Repair; Contractor	Repair potholes and shoulders.	RD-3128-15	10/20/15
UPPER BALCONES RD		#343, 238.	Pothole Repair; Contractor	Repair potholes and shoulders.	RD-3129-15	10/20/15
WHITWORTH RD		#307, 221.	Pothole Repair; Contractor	Repair potholes and shoulders.	RD-3124-15	10/20/15
WILD HORSE DR	103		Pothole Repair; Contractor	Repair potholes and shoulders.	RD-3126-15	10/20/15
Maintenance						
RANGER CREEK RD		@ 0.9 miles.	Ditch Maintenance	Surplus dirt hauled and bladed into deep ditch.	RD-3068-15	10/13/15
RANGER CREEK RD		@ 0.9 miles.	Ditch Maintenance	Hauled surplus dirt and blade in deep ditch.	RD-3072-15	10/14/15
WHITWORTH RD		@ 1.1 miles.	Debris Removal	Clean up concrete bags off road.	RD-3092-15	10/14/15
<hr/>						
Total WO's For Pct	1	10				

Route	Address	Location	Activity	Details	W.O. No	Date
Precinct 2						
Brush						
JACOB DR		@ 0.0 to .15 miles.	Right-of-Way Clearing	Cut low hanging limbs.	RD-3070-15	10/14/15
RUST LN		@ 0.0 to 1.0 miles.	Right-of-Way Clearing	Cut dead tree and brush hitting vehicles.	RD-3069-15	10/13/15
RUST LN		@ 1.0 to 1.8 miles.	Right-of-Way Clearing	Cut brush in ROW.	RD-3071-15	10/14/15
Cleaning and Debris						
RIVER MOUNTAIN DR		@ 1.62 miles.	Litter	Pick up cedar stump off the side of the road.	RD-3120-15	10/26/15
Contractor Work						
CAMP ALZAFAR RD		From Co Maint. sign to #19.	Pothole Repair; Contractor	Repair potholes and shoulders.	RD-3081-15	10/12/15
CAMP ALZAFAR RD		#13 to #1.	Pothole Repair; Contractor	Repair potholes and shoulders.	RD-3083-15	10/14/15
OLD SAN ANTONIO RD	41		Pothole Repair; Contractor	Repair potholes and shoulders.	RD-3122-15	10/20/15
RUST LN		#50, 48, 11, 12.	Pothole Repair; Contractor	Repair potholes and shoulders.	RD-3084-15	10/14/15
SPRING CREEK RD		#137, 24.	Pothole Repair; Contractor	Repair potholes and shoulders.	RD-3082-15	10/14/15
Flood Related						
VARIOUS RD			Barricades	Closed flooded roads.	RD-3284-15	10/30/15
Maintenance						
KREUTZBERG RD		@ .30 miles.	Road Surface	Reclaim road surface and haul off material.	RD-3118-15	10/15/15
KREUTZBERG RD		@ .30 miles.	Road Surface	Prepping road surface for new asphalt.	RD-3119-15	10/19/15
KREUTZBERG RD	30		Road Surface	Haul #58 from shop to work site.	RD-3135-15	10/19/15
KREUTZBERG RD	3		Ditch Maintenance	Clean ditch line.	RD-3097-15	10/19/15
KREUTZBERG RD	17		Road Surface	Re-work section of road for asphalt.	RD-3105-15	10/20/15
KREUTZBERG RD	17		Road Surface	Blade asphalt on first curve.	RD-3139-15	10/21/15
KREUTZBERG RD	101		Road Surface	Mill up asphalt to level up curve.	RD-3183-15	10/26/15
KREUTZBERG RD	38		Road Surface	Level up curve.	RD-3184-15	10/26/15
KREUTZBERG RD		@ 1.0 miles.	Road Surface	Level up curve.	RD-3186-15	10/28/15
KREUTZBERG RD		@ 0.80 miles.	Road Surface	Curve level up.	RD-3277-15	10/29/15
KREUTZBERG RD		@ 1.0 miles.	Road Surface	Curve level up.	RD-3278-15	10/29/15
PRADO XING		@ .6 to .7 miles.	Ditch Maintenance	Remove silt fence and clean ditch line.	RD-3086-15	10/14/15
SPRING CREEK RD	46		Ditch Maintenance	Clean ditch line.	RD-3087-15	10/14/15
SPRING CREEK RD	122		Road Surface	Level up shoulder.	RD-3085-15	10/14/15
Miscellaneous						
BRANDT RD	23		Labor Various	Clean out under cattle guard.	RD-3185-15	10/27/15
CHARGER BLVD	202	Brush site.	Labor Various	Haul #65 loader to brush site.	RD-3109-15	10/22/15
KREUTZBERG RD		@ .52 miles.	Labor Various	Haul 29 to Kreutzberg Rd, bring 58 to shop.	RD-3166-15	10/27/15
OLD FREDERICKSBURG RD		Site # 2/9.	Barricades	Close @ 8:15 Open @ 6:05 pm.	RD-3113-15	10/24/15

New Construction

<u>Route</u>	<u>Address</u>	<u>Location</u>	<u>Activity</u>	<u>Details</u>	<u>W.O. No</u>	<u>Date</u>
New Construction						
HERFF RD		2nd phase section of Herff Rd.	Brush Removal	Remove low hanging limbs.	RD-3037-15	10/1/15
Non Road and Bridge						
CHARGER BLVD	202	Brush Site.	Chipping	Grinding brush.	RD-3055-15	10/5/15
CHARGER BLVD	202	Brush Site.	Chipping	Grinding brush.	RD-3056-15	10/6/15
CHARGER BLVD	202	Brush site.	Chipping	Grinding Brush.	RD-3094-15	10/14/15
CHARGER BLVD	202	Brush site.	Chipping	Grinding brush. 5 hours.	RD-3103-15	10/19/15
CHARGER BLVD	202		Labor Various	Haul unit #38 from R&B to brush site.	RD-3134-15	10/19/15
CHARGER BLVD	202	Brush site.	Chipping	Grinding Brush. 6.75 hours.	RD-3106-15	10/20/15
CHARGER BLVD	202	Brush site.	Chipping	Grinding Brush.	RD-3141-15	10/21/15
Total WO's For Pct 2		36				

Route	Address	Location	Activity	Details	W.O. No	Date
<i>Precinct</i>	3					
Flood Related						
EDGE FALLS RD		@ 1.8 miles.	Debris Removal	Clean debris from under bridge.	RD-3112-15	10/24/15
<hr/>						
Total WO's For Pct	3	1				

Route	Address	Location	Activity	Details	W.O. No	Date
Precinct 4						
Brush						
ALAMO RD		@ 0.0 to 1.36 miles.	Right-of-Way Clearing	Cut low hanging limbs.	RD-3088-15	10/15/15
DEER RD		@ 0.0 to 2.0 miles.	Right-of-Way Clearing	Cut low hanging limbs.	RD-3089-15	10/15/15
DEER RD		@ 2.0 to 2.59 miles.	Right-of-Way Clearing	Cut low hanging limbs.	RD-3090-15	10/19/15
GLENN OAKS DR		@ 0.0 to 0.22 miles.	Right-of-Way Clearing	Cut low hanging limbs.	RD-3150-15	10/27/15
GRAPE CREEK RD		@ 4 to 5.6 miles.	Right-of-Way Clearing	Pick up brush left in ROW.	RD-3146-15	10/26/15
HAWK RD		@ 0.0 to 0.53 miles.	Right-of-Way Clearing	Cut low hanging limbs.	RD-3091-15	10/19/15
LAKE RUN		@ 0.0 to 0.15 miles.	Right-of-Way Clearing	Cut low hanging limbs.	RD-3148-15	10/27/15
MOUNTAIN SPRINGS DR		@ Walnut Grove Rd.	Right-of-Way Clearing	Trim tree hit by truck.	RD-3182-15	10/22/15
OAK ACRES LN		@ 0.5 to 0.67 miles.	Right-of-Way Clearing	Cut low hanging limbs.	RD-3149-15	10/27/15
OLD #9 HWY		@ .9 to 1.1 miles.	Right-of-Way Clearing	Cut low hanging limbs.	RD-3098-15	10/20/15
OLD #9 HWY		@ 0.0 to 0.1 miles.	Right-of-Way Clearing	Cut low hanging limbs.	RD-3099-15	10/20/15
OLD #9 HWY		@ 1.2 to 2.3 miles.	Right-of-Way Clearing	Cut low hanging limbs.	RD-3100-15	10/21/15
OLD #9 HWY		@ 2.3 to 2.8 miles.	Right-of-Way Clearing	Cut low hanging limbs.	RD-3147-15	10/26/15
SEVENTH ST		@ .5 miles.	Right-of-Way Clearing	Cut low hanging limbs.	RD-3111-15	10/22/15
UPPER CIBOLO CREEK RD		@ 4.15 to 5.57 miles.	Right-of-Way Clearing	Cut and chip brush in ROW.	RD-3063-15	10/8/15
UPPER CIBOLO CREEK RD		@ 0.5 to 0.8 miles.	Right-of-Way Clearing	Cut low hanging limbs.	RD-3157-15	10/19/15
UPPER CIBOLO CREEK RD		@ 0.0 to 0.5 miles.	Right-of-Way Clearing	Cut low hanging limbs.	RD-3168-15	10/28/15
UPPER CIBOLO CREEK RD		@ 4.0 to 4.18 miles.	Right-of-Way Clearing	Cut brush in ROW.	RD-3169-15	10/29/15
Cleaning and Debris						
COUNTRY LN		@ .2 miles.	Right-of-Way Clearing	Clean brush on road.	RD-3110-15	10/22/15
Contractor Work						
FLAT ROCK CREEK RD	134		Pothole Repair; Contractor	Repair potholes and shoulders.	RD-3079-15	10/9/15
POEHNERT RD		#39, 25, @ Waring Welfare Rd.	Pothole Repair; Contractor	Repair potholes and shoulders.	RD-3076-15	10/7/15
UPPER CIBOLO CREEK RD		@ 3.7 to 4.2 miles.	Pothole Repair; Contractor	Repair potholes and shoulders.	RD-3077-15	10/7/15
UPPER CIBOLO CREEK RD		@ 0.0 to 3.6 miles.	Pothole Repair; Contractor	Repair potholes and shoulders.	RD-3078-15	10/8/15
UPPER CIBOLO CREEK RD		@ 3.6 to 4.2 miles.	Pothole Repair; Contractor	Repair potholes and shoulders.	RD-3080-15	10/9/15
UPPER SISTERDALE RD	401		Pothole Repair; Contractor	Repair potholes and shoulders.	RD-3155-15	10/26/15
WALNUT GROVE NORTH	623		Pothole Repair; Contractor	Repair potholes and shoulders.	RD-3156-15	10/26/15
WARING WELFARE RD		#101, 126, 142, 415, 426, 441.	Pothole Repair; Contractor	Repair potholes and shoulders.	RD-3075-15	10/6/15
Flood Related						
CAMP CAPERS LN		@ 0.0 to .10 miles.	Road Surface	Blade road and add base for level up.	RD-3050-15	10/1/15
HOLIDAY RD		@ 8.1 miles.	Road Surface	Clean out culvert pipe.	RD-3049-15	10/6/15
HOLIDAY RD		@ 10.4 miles.	Road Surface	Push rocks out of way and smooth road.	RD-3061-15	10/7/15
UPPER CIBOLO CREEK RD	6		Road Surface	Fix Wash out	RD-3036-15	10/1/15
VARIOUS RD			Barricades	Checked various sites for broken or missing.	RD-3283-15	10/23/15

Route	Address	Location	Activity	Details	W.O. No	Date
Herbicides and Vegetation						
POSSUM CREEK RD		@ 0.5 to 2.5 Miles.	Spot spray.	Pavement Management	Spot Spray for total kill.	RDH-1198-15 10/23/15
Maintenance						
BLUE RDG		@ 0.0 to 0.2 miles.		Road Surface	Clean dirt on inside of curb.	RD-3130-15 10/15/15
GILES RANCH RD		@ .75 miles.		Road Surface	Provided water for James Reeh.	RD-3117-15 10/15/15
HOLIDAY RD		@ 5.9 miles.		Road Surface	Haul rental backhoe to Holiday Rd.	RD-3165-15 10/27/15
HOLIDAY RD		@ 8.3 to 8.5 miles.		Road Surface	Blade and reshape road.	RD-3151-15 10/27/15
HOLIDAY RD		@ 8.5 to 8.7 miles.		Road Surface	Blade and reshape road.	RD-3153-15 10/28/15
LITTLE JOSHUA CREEK RD		@ 2.05 to 1.90 miles.		Road Surface	Blade road.	RD-3163-15 10/26/15
LITTLE JOSHUA CREEK RD		@ 2.05 to 1.9 miles.		Road Surface	Blade and reshape road.	RD-3152-15 10/27/15
OLD #9 HWY		@ 2.5 miles.		Road Surface	Repair edge of road.	RD-3107-15 10/21/15
POSSUM CREEK RD				Road Surface	Haul #29 from upper cibolo to possum creek.	RD-3136-15 10/19/15
POSSUM CREEK RD		@ 0.0 to 0.2 miles.		Road Surface	Blade road.	RD-3137-15 10/19/15
POSSUM CREEK RD		@ 0.1 miles.		Road Surface	Haul 151 from 4-H to Possum Creek Road.	RD-3158-15 10/19/15
POSSUM CREEK RD		@ 1.1 to 1.4 miles.		Road Surface	Blade road.	RD-3138-15 10/20/15
POSSUM CREEK RD		@ 1.4 to 1.7 miles.		Road Surface	Blade road.	RD-3140-15 10/21/15
WARING WELFARE RD	403			Road Surface	Repair edge of road.	RD-3164-15 10/26/15
WARING WELFARE RD		@ 4.1 miles.		Ditch Maintenance	Filled in shoulder drop off.	RD-3276-15 10/29/15
Miscellaneous						
CAMP CAPERS LN				Labor Various	Move blade back to Comfort yard for LOF.	RD-3052-15 10/1/15
DANIEL DR	109			Data Collection	Shoot Grade.	RD-3132-15 10/15/15
EDGEWOOD DR	109			Data Collection	Shoot Grade.	RD-3131-15 10/15/15
FM 289	648	KCYAEC.		Labor Various	Lay in material south parking lot.	RD-3051-15 10/1/15
FM 289	648	KCYAEC.		Labor Various	Move material, build drainage burms.	RD-3054-15 10/5/15
FM 289	648	KCYAEC.		Labor Various	Mark new fence line and repair drainage.	RD-3057-15 10/6/15
FM 289	648	KCYAEC.		Labor Various	Parking lot prep for asphalt.	RD-3058-15 10/6/15
FM 289	648	KCYAEC.		Labor Various	Prep parking lot for asphalt.	RD-3062-15 10/8/15
FM 289	648	KCYAEC.		Labor Various	Prep parking lot for asphalt.	RD-3065-15 10/12/15
FM 289	648	KCYAEC.		Labor Various	Prep arena for asphalt.	RD-3066-15 10/13/15
FM 289	648	KCYAEC.		Labor Various	Prep arena floor, prep water drainage.	RD-3073-15 10/14/15
FM 289	648	KCYAEC.		Labor Various	Pick up extra material, prep for leaving job.	RD-3095-15 10/15/15
FM 289	648	KCYAEC.		Labor Various	Level S. parking lot. Add shot rock to drainage.	RD-3096-15 10/19/15
HOLIDAY RD		@ 8.1 miles.		Road Surface	Clean out culvert.	RD-3059-15 10/7/15
OLD COMFORT RD	3	Road & Bridge.		Training	Loader training W/O operation.	RD-3143-15 10/22/15
OLD COMFORT RD	3	Road & Bridge.		Training	Flag training and work zone safety.	RD-3144-15 10/22/15
OLD COMFORT RD	3	Road & Bridge.		Labor Various	Clean asphalt, move rock, Circulate AEP.	RD-3145-15 10/22/15
OLD COMFORT RD	3	Comfort Yard.		Labor Various	Demuck, preasure wash 75% of truck.	RD-3159-15 10/22/15
OLD COMFORT RD	3	Comfort Yard.		Labor Various	Demuck, preasure wash 25% of truck.	RD-3160-15 10/23/15

Route	Address	Location	Activity	Details	W.O. No	Date
Miscellaneous						
PANKRATZ RD			Labor Various	Haul #86 roller from Pankratz Rd to 4-H center.	RD-3053-15	10/1/15
POEHNERT RD		@ 0.0 miles.	Labor Various	Haul 45 backhoe to Poehnert Rd.	RD-3161-15	10/26/15
POEHNERT RD		@ 0.0 to 1.2 miles.	Roadway Inspection	Inspect road.	RD-3162-15	10/26/15
Mowing						
ANCIENT COAST RD		@ .0 to .45 miles.	Mowing	Mow Right-of-Way.	RD-3006-15	10/5/15
AVENUE A		@ 0.0 to 0.17 miles.	Mowing	Mow Right-of-Way. NOT NEEDED.	RD-3016-15	10/6/15
BROADWAY		@ 0.0 to .89 Miles.	Mowing	Mow Right-of-Way.	RD-3026-15	10/6/15
CROSSING RD		@ .0 to .07 miles.	Mowing	Mow Right-of-Way.	RD-3002-15	10/1/15
DEER RD		@ 1.10 to 3.34 miles.	Mowing	Mow Right-of-Way.	RD-2998-15	10/1/15
DEER RD		@ .0 to 1.1 miles.	Mowing	Mow Right-of-Way.	RD-3005-15	10/5/15
EIGHTH ST		@ 0.0 to .40 Miles.	Mowing	Mow Right-of-Way.	RD-3021-15	10/6/15
EIGHTH ST	205		Mowing	Mow Right-of-Way.	RD-3022-15	10/6/15
EIGHTH ST	218		Mowing	Mow Right-of-Way.	RD-3023-15	10/6/15
EIGHTH ST	226		Mowing	Mow Right-of-Way.	RD-3024-15	10/6/15
FLAT ROCK CREEK RD		@ .0 to 1.9 miles.	Mowing	Mow Right-of-Way.	RD-2995-15	10/1/15
FLAT ROCK CREEK RD		@ 1.69 to 3.69 miles.	Mowing	Mow Right-of-Way.	RD-3015-15	10/5/15
HAWK RD		@ .0 to .53 miles.	Mowing	Mow Right-of-Way.	RD-2999-15	10/1/15
HIGH ST		@ 0.0 to 1.33 Miles.	Mowing	Mow Right-of-Way.	RD-3019-15	10/6/15
HIGH STREET RD		@ 0.0 to 1.37 Miles.	Mowing	Mow Right-of-Way.	RD-3074-15	10/6/15
KENDALL JACKSON			Labor Various	Road tractor to Wood Ridge from Alamo Springs.	RD-3014-15	10/5/15
KENDALL JACKSON		@ .0 to 1.49 miles.	Mowing	Mow Right-of-Way.	RD-3008-15	10/5/15
LINDNER AVE		@ 0.0 to 0.18 miles.	Mowing	Mow Right-of-Way. NOT NEEDED.	RD-3017-15	10/6/15
MAIN ST		@ 0.0 to .86 Miles.	Mowing	Mow Right-of-Way.	RD-3020-15	10/6/15
MERLOT		@ .0 to .06 miles.	Mowing	Mow Right-of-Way.	RD-3013-15	10/5/15
NAPA RIDGE		@ .0 to .25 miles.	Mowing	Mow Right-of-Way.	RD-3010-15	10/5/15
OAK RD		@ .0 to .27 miles.	Mowing	Mow Right-of-Way.	RD-2997-15	10/1/15
PANKRATZ RD		@ 0.0 to .99 Miles.	Mowing	Mow Right-of-Way.	RD-3028-15	10/6/15
PANKRATZ RD			Labor Various	Road tractors to yard.	RD-3029-15	10/6/15
PINE RD		@ .0 to .28 miles.	Mowing	Mow Right-of-Way.	RD-3007-15	10/5/15
POINT RD		@ .0 to .28 miles.	Mowing	Mow Right-of-Way.	RD-3004-15	10/5/15
SEVENTH ST		@ 0.0 to .81 Miles.	Mowing	Mow Right-of-Way.	RD-3027-15	10/6/15
SEVENTH ST	206		Mowing	Mow Right-of-Way.	RD-3025-15	10/6/15
SISTER CRK		@ .0 to .1 miles.	Mowing	Mow Right-of-Way.	RD-3009-15	10/5/15
SONOMA RDG		@ .0 to .3 miles.	Mowing	Mow Right-of-Way.	RD-3011-15	10/5/15
SPRING RD		@ .5 to 1.28 miles.	Mowing	Mow Right-of-Way.	RD-2996-15	10/1/15
TURKEY RD		@ .0 to .22 miles.	Mowing	Mow Right-of-Way.	RD-3001-15	10/1/15
US 87		@ FM 473	Mowing	Mow Right-of-Way.	RD-3018-15	10/6/15

Route	Address	Location	Activity	Details	W.O. No	Date
Mowing						
VALLEY RD		@ .0 to .87 miles.	Mowing	Mow Right-of-Way.	RD-3003-15	10/1/15
WALNUT RD		@ .0 to 1.65 miles.	Mowing	Mow Right-of-Way.	RD-3000-15	10/1/15
ZINFANDEL		@ .0 to .08 miles.	Mowing	Mow Right-of-Way.	RD-3012-15	10/5/15
New Construction						
UPPER CIBOLO CREEK RD		@ 5.27 to 5.56 miles.	Road Surface	Re-blade road and prep for seal coat.	RD-3102-15	10/8/15
UPPER CIBOLO CREEK RD		@ 4.3 to 5.0 miles.	Road Surface	Level up road with type D and oil.	RD-3064-15	10/9/15
UPPER CIBOLO CREEK RD		@ 5.0 to 5.2 miles.	Road Surface	Level up road with type D and oil.	RD-3067-15	10/13/15
Non Road and Bridge						
FIFTH ST		@ 1.1 miles.	Road Surface	Help AJW with fifth street repair.	RD-3104-15	10/2/15
FIFTH ST		@ 1.2 miles.	Road Surface	Help AJW patch fifth street.	RD-3108-15	10/21/15
OLD COMFORT RD	3		Labor Various	Haul unit #65 from brush site to R&B for repair.	RD-3133-15	10/19/15
Paving and Prep						
BERGMANN RD		Entire Road.	Seal Coat 1 Course	Seal Coat Single Course; Grd 4.	RD-3258-15	10/1/15
BERGMANN RD		@ 0.0 to .14 miles.	Road Surface	Seal coat prep.	RD-3048-15	10/6/15
CAROLYN LN		Entire Road.	Seal Coat 1 Course	Seal Coat Single Course; Grd 4.	RD-3269-15	10/7/15
CEDAR ST		Entire Road.	Seal Coat 1 Course	Seal Coat Single Course; Grd 4.	RD-3272-15	10/7/15
CHAPARRAL HILL DR		Entire Road.	Seal Coat 1 Course	Seal Coat Single Course; Grd 4.	RD-3265-15	10/6/15
DOE DR		Entire Road.	Seal Coat 1 Course	Seal Coat Single Course; Grd 4.	RD-3271-15	10/7/15
E FABRA LN		Entire Road.	Seal Coat 1 Course	Seal Coat Single Course; Grd 4.	RD-3262-15	10/2/15
ELM SPRINGS DR		Entire Road.	Seal Coat 1 Course	Seal Coat Single Course; Grd 4.	RD-3268-15	10/7/15
FABRA OAKS RD		Entire Road.	Seal Coat 1 Course	Seal Coat Single Course; Grd 4.	RD-3260-15	10/2/15
FABRA WAY		Entire Road.	Seal Coat 1 Course	Seal Coat Single Course; Grd 4.	RD-3261-15	10/2/15
FAWN LN		Entire Road.	Seal Coat 1 Course	Seal Coat Single Course; Grd 4.	RD-3267-15	10/6/15
HOLIDAY RD		From 6.5 to 8.1 Miles.	Seal Coat 2 Course	Seal Coat Two Course; Grd 4, Grd 3.	RD-3275-15	10/14/15
HOLIDAY RD		@ 7.0 to 7.5 miles.	Road Surface	Shoveled and broomed debris off road.	RD-3116-15	10/14/15
KENDALL OAKS DR		Entire Road.	Seal Coat 1 Course	Seal Coat Single Course; Grd 4.	RD-3266-15	10/6/15
ROLLING ACRES RD		Entire Road.	Seal Coat 1 Course	Seal Coat Single Course; Grd 4.	RD-3257-15	10/1/15
ROLLING ACRES RD		@ 0.0 to .44 miles.	Road Surface	Seal coat prep.	RD-3047-15	10/6/15
SHOOTING CLUB RD		Entire Road.	Seal Coat 1 Course	Seal Coat Single Course; Grd 4.	RD-3254-15	10/1/15
SHOOTING CLUB RD S		Entire Road.	Seal Coat 1 Course	Seal Coat Single Course; Grd 4.	RD-3255-15	10/1/15
SKYLAND DR		Entire Road.	Seal Coat 1 Course	Seal Coat Single Course; Grd 4	RD-3263-15	10/2/15
SPANISH PASS RD		Entire Road.	Seal Coat 1 Course	Seal Coat Single Course; Grd 4	RD-3252-15	10/1/15
SPANISH PASS RD		@ 0.60 to 2.64 miles.	Road Surface	Seal coat prep.	RD-3039-15	10/5/15
SPANISH PASS RD		@ 0.0 to .20 miles.	Road Surface	Seal coat prep.	RD-3046-15	10/6/15
STARVIEW CT		Entire Road.	Seal Coat 1 Course	Seal Coat Single Course; Grd 4	RD-3253-15	10/1/15
STARVIEW CT		@ 0.0 to .15 miles.	Road Surface	Seal coat prep.	RD-3038-15	10/5/15
UPPER CIBOLO CREEK RD		@ 0.2 to 1.0 miles.	Road Surface	Level up road for seal coat.	RD-3045-15	10/5/15

Route	Address	Location	Activity	Details	W.O. No	Date
Paving and Prep						
UPPER CIBOLO CREEK RD		@ 0.3 to 2.1 miles.	Road Surface	Clean grass and dirt off the edges of the road.	RD-3040-15	10/5/15
UPPER CIBOLO CREEK RD		@ 1.4 to 1.7 miles.	Road Surface	Level up rough spots in road.	RD-3041-15	10/7/15
UPPER CIBOLO CREEK RD		@ 2.1 to 2.8 miles.	Road Surface	Seal coat prep.	RD-3060-15	10/7/15
UPPER CIBOLO CREEK RD		@ 3.3 to 3.5 miles.	Road Surface	Level up rough spots in road.	RD-3042-15	10/8/15
UPPER CIBOLO CREEK RD		@ 1.9 to 2.6 miles.	Road Surface	Level up rough spots in road.	RD-3043-15	10/8/15
UPPER CIBOLO CREEK RD		@ 2.89 to 4.1 miles.	Road Surface	Seal coat prep.	RD-3101-15	10/8/15
UPPER CIBOLO CREEK RD		From 0 to 4.1 Miles.	Seal Coat 1 Course	Seal Coat Single Course; Grd 4.	RD-3273-15	10/9/15
UPPER CIBOLO CREEK RD		From 4.1 Miles to 5.57 Miles.	Seal Coat 2 Course	Seal Coat Two Course; Grd 4,Grd3	RD-3274-15	10/13/15
UPPER CIBOLO CREEK RD		@ 4.1 to 4.3 miles.	Road Surface	Patch shoulder drop off.	RD-3121-15	10/13/15
W FABRA LN		Entire Road.	Seal Coat 1 Course	Seal Coat Single Course; Grd 4	RD-3259-15	10/2/15
WOLLSCHLAEGER DR		Entire Road.	Seal Coat 1 Course	Seal Coat Single Course; Grd 4.	RD-3270-15	10/7/15
Total WO's For Pct 4		148				

Route	Address	Location	Activity	Details	W.O. No	Date
Precinct COB						
Non Road and Bridge						
CHARGER BLVD	202	Brush site.	Chipping	Grinding Brush.	RD-3093-15	10/14/15
CHARGER BLVD	202	Brush site.	Chipping	Grinding Brush.	RD-3142-15	10/21/15
Total WO's For Pct COB		2				

<u>Route</u>	<u>Address</u>	<u>Location</u>	<u>Activity</u>	<u>Details</u>	<u>W.O. No</u>	<u>Date</u>
Total Work Orders	197					

2015 SEAL COAT

District 1

Route	Location Description	Category	Stop Date	Work Order	Total Cost
Activity Seal Coat 1 Course					
UPPER BALCONES RD	@ Coughran Road.	Paving and Prep	9/28/15	RD-3247-15	\$4,357.50
Total For	1			\$4,357.50	
Work Orders Count	1				

District 2

Route	Location Description	Category	Stop Date	Work Order	Total Cost
Activity Seal Coat 1 Course					
AMMANN RD	Entire Road.	Paving and Prep	9/23/15	RD-3237-15	\$74,730.00
NOEL CT	Entire Road.	Paving and Prep	9/23/15	RD-3239-15	\$2,302.50
OAKWOOD LN	Entire Road.	Paving and Prep	9/23/15	RD-3241-15	\$2,992.50
PARK LN	Entire Road.	Paving and Prep	9/23/15	RD-3245-15	\$4,305.00
ROBIN'S WAY	Entire Road.	Paving and Prep	9/23/15	RD-3244-15	\$5,061.00
SANDY OAKS DR	Entire Road.	Paving and Prep	9/23/15	RD-3240-15	\$19,534.50
SAVANNAH JON BLVD	Entire Road.	Paving and Prep	9/23/15	RD-3238-15	\$19,554.00
SHARON DR	Entire Road.	Paving and Prep	9/28/15	RD-3246-15	\$18,996.00
WOOD BERRY LN	Entire Road.	Paving and Prep	9/23/15	RD-3242-15	\$3,625.50
WOOD TRAIL	Entire Road.	Paving and Prep	9/23/15	RD-3243-15	\$5,101.50
Total For	2			\$156,202.50	
Work Orders Count	10				

District 3

Route	Location Description	Category	Stop Date	Work Order	Total Cost
Activity Seal Coat 1 Course					
CHAPEL HILL	Entire Road.	Paving and Prep	9/22/15	RD-3236-15	\$2,737.50
CINDY LN	Entire Road.	Paving and Prep	9/22/15	RD-3235-15	\$2,395.50
COUNTRY COR	Entire Road.	Paving and Prep	9/22/15	RD-3233-15	\$2,569.50
HONEY HILL	Entire Road.	Paving and Prep	9/22/15	RD-3223-15	
INDIAN KNOLL DR	Entire Road.	Paving and Prep	9/15/15	RD-3249-15	\$7,153.50
LONESOME LN	Entire Road.	Paving and Prep	9/22/15	RD-3232-15	\$2,241.00
MARQUARDT RD	.68 Miles total length.	Paving and Prep	9/14/15	RD-3196-15	\$11,970.00
N WALNUT WAY	Entire Road.	Paving and Prep	9/22/15	RD-3222-15	\$21,810.00
NOLLKAMPER RD	Entire Road.	Paving and Prep	9/15/15	RD-3250-15	\$11,094.00
OAK DELL	Entire road.	Paving and Prep	9/22/15	RD-3234-15	\$2,085.00
PARADISE PATH	Entire Road.	Paving and Prep	9/22/15	RD-3230-15	\$2,764.50
PRIVILEGE PASS	Entire Road.	Paving and Prep	9/22/15	RD-3224-15	\$2,928.00
RESTY RUN	Entire Road.	Paving and Prep	9/22/15	RD-3229-15	\$2,160.00
RIDGE VIEW DR	Entire Road.	Paving and Prep	9/15/15	RD-3251-15	\$3,574.50

Route	Location Description	Category	Stop Date	Work Order	Total Cost
SCENIC VW	Entire Road.	Paving and Prep	9/22/15	RD-3226-15	\$2,485.50
SIEBENEICHER RD	Entire Road.	Paving and Prep	9/16/15	RD-3199-15	\$23,406.00
TERRACE TRL	Entire Road.	Paving and Prep	9/22/15	RD-3231-15	\$1,966.50
TIMBER TRL	Entire Road.	Paving and Prep	9/22/15	RD-3227-15	\$5,770.50
VALLEY VIEW	Entire Road.	Paving and Prep	9/22/15	RD-3225-15	\$1,957.50
WALNUT WAY		Paving and Prep	9/22/15	RD-3221-15	\$19,416.00
WASP CREEK RD	Entire Road.	Paving and Prep	9/15/15	RD-3248-15	\$5,841.00
WOODY WAY	Entire Road.	Paving and Prep	9/22/15	RD-3228-15	\$2,589.00
Total For	3			\$138,915.00	

Work Orders Count 22

District 4

Route	Location Description	Category	Stop Date	Work Order	Total Cost
Activity Seal Coat 1 Course					
AMBER DR	Entire Road.	Paving and Prep	9/3/15	RD-3210-15	\$4,959.00
ANTLERS WAY	Entire Road.	Paving and Prep	9/17/15	RD-3201-15	\$12,486.00
ARTHUR ST	Entire Road.	Paving and Prep	9/21/15	RD-3208-15	\$4,743.00
BERGMANN RD	Entire Road.	Paving and Prep	10/1/15	RD-3258-15	\$1,630.50
CANYON RIDGE DR	Entire Road.	Paving and Prep	9/18/15	RD-3203-15	\$9,154.50
CAROLYN LN	Entire Road.	Paving and Prep	10/7/15	RD-3269-15	\$736.50
CEDAR ST	Entire Road.	Paving and Prep	10/7/15	RD-3272-15	\$2,475.00
CHAPARRAL HILL DR	Entire Road.	Paving and Prep	10/6/15	RD-3265-15	\$5,886.00
COUNTRY LN	Entire Road.	Paving and Prep	9/4/15	RD-3216-15	\$3,828.00
CYPRESS BEND DR	Entire Road.	Paving and Prep	9/16/15	RD-3200-15	\$20,766.00
DOE DR	Entire Road.	Paving and Prep	10/7/15	RD-3271-15	\$1,828.50
E FABRA LN	Entire Road.	Paving and Prep	10/2/15	RD-3262-15	\$3,964.50
EAST ST	Entire Road.	Paving and Prep	9/3/15	RD-3211-15	\$8,682.00
EIGHTH ST	Entire Road.	Paving and Prep	9/4/15	RD-3217-15	\$11,125.50
ELM SPRINGS DR	Entire Road.	Paving and Prep	10/7/15	RD-3268-15	\$7,999.50
FABRA OAKS RD	Entire Road.	Paving and Prep	10/2/15	RD-3260-15	\$10,741.50
FABRA WAY	Entire Road.	Paving and Prep	10/2/15	RD-3261-15	\$663.00
FAWN LN	Entire Road.	Paving and Prep	10/6/15	RD-3267-15	\$1,377.00
FIFTH ST	All but .1 miles.	Paving and Prep	9/3/15	RD-3213-15	\$26,496.00
FIRST ST	Entire Road.	Paving and Prep	9/1/15	RD-3187-15	\$1,308.00
FOURTH ST	Entire Road.	Paving and Prep	9/2/15	RD-3191-15	\$6,010.50
HUNTERS VIEW CIR	Entire Road.	Paving and Prep	9/17/15	RD-3202-15	\$14,730.00
INDEPENDENCE PKWY	Entire Road.	Paving and Prep	9/4/15	RD-3220-15	\$2,914.50
JONES ST	Entire Road.	Paving and Prep	9/21/15	RD-3206-15	\$975.00
JUNGFRAU HILL RD	Entire Road.	Paving and Prep	9/11/15	RD-3195-15	\$34,506.00
KENDALL OAKS DR	Entire Road.	Paving and Prep	10/6/15	RD-3266-15	\$10,866.00

Route	Location Description	Category	Stop Date	Work Order	Total Cost
LINDNER AVE	Entire Road.	Paving and Prep	9/4/15	RD-3219-15	\$3,447.00
LOEFFLER ST	Entire Road.	Paving and Prep	9/21/15	RD-3205-15	\$870.00
MARQUARDT RD	3.5 Miles total length.	Paving and Prep	9/15/15	RD-3197-15	\$63,661.50
MARQUARDT RD	3.5 Miles total length.	Paving and Prep	9/14/15	RD-3198-15	\$11,970.00
MARTIN ST	Entire Road.	Paving and Prep	9/21/15	RD-3207-15	\$3,099.00
NORTH CREEK RD	Entire Road.	Paving and Prep	9/2/15	RD-3192-15	\$39,402.00
PANKRATZ RD	.47 Miles total length.	Paving and Prep	9/9/15	RD-3194-15	\$23,802.57
RIVER BLUFF DR	Entire Road.	Paving and Prep	9/18/15	RD-3204-15	\$17,005.50
ROLLING ACRES RD	Entire Road.	Paving and Prep	10/1/15	RD-3257-15	\$7,593.00
ROOSEVELT AVE	Entire Road.	Paving and Prep	9/4/15	RD-3218-15	\$3,708.00
SECOND ST	Entire road.	Paving and Prep	9/1/15	RD-3188-15	\$8,664.00
SEVENTH ST	Entire Road.	Paving and Prep	9/4/15	RD-3215-15	\$20,412.00
SHOOTING CLUB RD	Entire Road.	Paving and Prep	10/1/15	RD-3254-15	\$28,447.50
SHOOTING CLUB RD S	Entire Road.	Paving and Prep	10/1/15	RD-3255-15	\$1,044.00
SIXTH ST	Entire Road.	Paving and Prep	9/3/15	RD-3214-15	\$9,960.00
SKYLAND DR	Entire Road.	Paving and Prep	10/2/15	RD-3263-15	\$11,143.50
SPANISH PASS RD	Entire Road.	Paving and Prep	10/1/15	RD-3252-15	\$46,123.50
STARVIEW CT	Entire Road.	Paving and Prep	10/1/15	RD-3253-15	\$4,239.00
THIRD ST	Entire Road.	Paving and Prep	9/1/15	RD-3190-15	\$13,833.00
UPPER CIBOLO CREEK RD	From 0 to 4.1 Miles.	Paving and Prep	10/12/15	RD-3273-15	\$76,708.50
W FABRA LN	Entire Road.	Paving and Prep	10/2/15	RD-3259-15	\$13,896.00
WEST ST	Entire Road.	Paving and Prep	9/3/15	RD-3212-15	\$9,126.00
WOLLSCHLAEGER DR	Entire Road.	Paving and Prep	10/7/15	RD-3270-15	\$13,450.50
ACKER RD	3790 Ft. 1.7 to 2.0 miles.	Paving and Prep	9/21/15	RD-3209-15	\$23,497.38
HOLIDAY RD	From 6.5 to 8.1 Miles.	Paving and Prep	10/14/15	RD-3275-15	\$17,629.50
PANKRATZ RD	.52 Miles total length.	Paving and Prep	9/9/15	RD-3193-15	\$17,111.07
UPPER CIBOLO CREEK RD	From 4.1 Miles to 5.57 Miles.	Paving and Prep	10/13/15	RD-3274-15	\$26,382.24
Total For	4			\$727,078.26	
Work Orders Count	53				

Total Work Orders 86

\$1,026,553.26



KENDALL COUNTY COMMISSIONERS COURT AGENDA REQUEST

COMMISSIONER COURT DATE: 11/23/2015 OPEN SESSION	
SUBJECT	Operations Monthly report
DEPARTMENT & PERSON MAKING REQUEST	Kendall County Road & Bridge, Operations Jean Maxwell, Operations Supervisor
PHONE # OR EXTENSION #	830-249-9343, ext 652
TIME NEEDED FOR PRESENTATION	3 Minutes
WORDING OF AGENDA ITEM	Summary of Operations Report for October
REASON FOR AGENDA ITEM	Operations Monthly Report
IS THERE DOCUMENTATION	Yes
WHO WILL THIS AFFECT?	Road and Bridge Operations
ADDITIONAL INFORMATION	None



Kendall County Operations Monthly Report

October-2015

Route	Address	Location	Activity	Details	W.O. No	Date
Precinct	1					
Signs						
CAZNEAU LN		@ 0.01 miles.	Remove	Pick up discarded stop sign.	SI-1991-15	10/6/15
E SAN ANTONIO AVE	204	Court House back lot.	Replace	Replace bent No Thru Traffic sign pole.	SI-2020-15	10/8/15
SCENIC LOOP RD		@ .49 miles.	Repair	Repair knocked over object marker support.	SI-2063-15	10/26/15
TAPATIO DR W	407	Fabricate at shop.	Fabricate	Fabricate 911 address plate.	SI-2056-15	10/22/15
<hr/>						
Total WO's For Pct 1		4				

Route	Address	Location	Activity	Details	W.O. No	Date
Precinct	2					
Signs						
CASCADE CAVERNS RD		@ 1.25 and 1.35 miles.	Replace	Replace old school signs with HIP Green signs.	SI-2023-15	10/5/15
CASCADE CAVERNS RD		@ 1.0 miles.	Remove	Remove dead deer.	SI-2024-15	10/5/15
CASCADE CAVERNS RD		@ 1.2 and 1.4 miles.	Replace	Replace old school signs with HIP Green signs.	SI-2022-15	10/5/15
CIBOLO RIDGE TRAIL	202	Fabricate at shop.	Fabricate	Fabricate 911 address plate.	SI-2042-15	10/15/15
CLEAR SPRINGS DR	112	Fabricate at shop.	Fabricate	Fabricate 911 address plate.	SI-2057-15	10/26/15
HERFF RD		@ 0.3 and 0.4 miles.	Remove	Signs not needed. Stop Ahead Signs Removed.	SI-1989-15	10/5/15
HERFF RD		@ 0.34 and 0.36 miles.	Remove	Signs not needed. Stop Signs Removed.	SI-1990-15	10/5/15
HOSKINS TRAIL	218	Fabricate at shop.	Fabricate	Fabricate 911 address plate.	SI-2049-15	10/19/15
KREUTZBERG RD		@ 0.3 to .1 miles.	Remove	Change construction dates on sign.	SI-1999-15	10/1/15
KREUTZBERG RD		Fabricate at shop.	Fabricate	Fabricate Pavement Dropoff temporary sign.	SI-2035-15	10/15/15
KREUTZBERG RD		@ 0.12 miles.	Install	Place pavement dropoff sign. Plus 6 barrels.	SI-2038-15	10/15/15
KREUTZBERG RD		@ 0.04 miles.	Install	Place RWA and ERW signs.	SI-2036-15	10/15/15
KREUTZBERG RD		@ 0.35 miles.	Install	Place pavement dropoff sign.	SI-2039-15	10/15/15
KREUTZBERG RD		@ 0..55 miles.	Install	Place RWA and ERW signs.	SI-2041-15	10/15/15
KREUTZBERG RD		@ 0.5 miles.	Install	Place BPTS sign.	SI-2040-15	10/15/15
KREUTZBERG RD		@ 0.1 miles.	Install	Place BPTS sign.	SI-2037-15	10/15/15
SHARON DR		@ 0.35 and 0.6 miles.	Install	Install blue buttons.	SI-2033-15	10/14/15
Total WO's For Pct 2		17				

Route	Address	Location	Activity	Details	W.O. No	Date
Precinct	3					
Signs						
ARTHUR ST		@ 0.01 miles.	Replace	Replace faded street name sign.	SI-1983-15	10/1/15
ARTHUR ST		@ 0.07 miles.	Replace	Replace faded street name sign. Arthur & Martin.	SI-1984-15	10/1/15
BAR M RANCH RD	106	Fabricate at shop.	Fabricate	Fabricate 911 address plate.	SI-2050-15	10/19/15
EDGE FALLS RD		@ 7.1 miles.	Install	Replace missing loose livestock sign.	SI-1994-15	10/6/15
EDGE FALLS RD		@ 6.4 miles.	Install	Replace missing loose livestock sign.	SI-1995-15	10/6/15
EDGE FALLS RD		Fabricate at shop.	Fabricate	Fabricate FM 473 @ Edge Falls Road. Street	SI-1996-15	10/6/15
EDGE FALLS RD		@ 8.86 miles.	Install	Replace faded street name sign.	SI-1997-15	10/6/15
EDGE FALLS RD		@ 6.46 miles.	Install	Replace missing loose livestock sign.	SI-1993-15	10/6/15
EDGE FALLS RD		@ 5.4 miles.	Install	Replace missing loose livestock sign.	SI-1992-15	10/6/15
EDGE FALLS RD		Fabricate at shop.	Fabricate	Fabricate new street name sign.	SI-1986-15	10/6/15
EDGE FALLS RD		@ 1.9 miles.	Replace	Replace missing delineators.	SI-2046-15	10/19/15
FM 473	2045	Fabricate at shop.	Fabricate	Fabricate 911 address plate.	SI-2058-15	10/26/15
JONES ST		@ 0.07 miles.	Install	Replace faded street name sign. Jones @ Arthur	SI-1998-15	10/6/15
JONES ST		Fabricate at shop.	Fabricate	Fabricate new street name sign.	SI-1985-15	10/6/15
MARTIN ST		@ 0.01 miles.	Replace	Replace faded street name sign.	SI-1982-15	10/1/15
MOUNTAIN CREEK TRAIL		@ 1.46 miles.	Replace	Replace WFWOR with Road May Flood.	SI-2045-15	10/19/15
MOUNTAIN CREEK TRAIL		@ 1.26 miles.	Replace	Replace WFWOR with Road May Flood.	SI-2044-15	10/19/15
OLD BLANCO RD		@ 0.01 miles.	Replace	Replace faded street name sign.	SI-1981-15	10/1/15
OLD BLANCO RD		@ 4.3 miles.	Replace	Replace WFWOR with Road May Flood.	SI-2059-15	10/26/15
RIVER VIEW DR	126	Fabricate at shop.	Fabricate	Fabricate 911 address plate.	SI-2087-15	10/29/15
SADDLE MOUNTAIN DR		@ 1.26 miles.	Replace	Replace faded Yield sign.	SI-2043-15	10/19/15
SADDLE MOUNTAIN DR		@ 0.01 miles.	Replace	Replace faded street name sign.	SI-2048-15	10/19/15
SADDLE MOUNTAIN DR		Fabricate at shop.	Fabricate	Fabricate Street name sign.	SI-2052-15	10/19/15
SEEWALD RD	204	Fabricate at shop.	Fabricate	Fabricate 911 address plate.	SI-2086-15	10/29/15
SMISER-SMITH RD	35	Fabricate at shop.	Fabricate	Fabricate 911 address plate.	SI-2055-15	10/22/15
SUNRISE DR	130	Fabricate at shop.	Fabricate	Fabricate 911 address plate.	SI-2021-15	10/8/15
WHITE WATER RD		@ 0.01 miles.	Replace	Replace faded street name sign.	SI-2047-15	10/19/15
WHITE WATER RD		Fabricate at shop.	Fabricate	Fabricate Street name sign.	SI-2051-15	10/19/15

Total WO's For Pct 3

28

Route	Address	Location	Activity	Details	W.O. No	Date
Precinct 4						
Signs						
BLASCHKE RD		@ 1.4 miles.	Repair	Reweld wing back on cattle guard.	SI-2034-15	10/14/15
CRAVEY RD		@ 1.71 miles.	Fabricate	Install and fabricate Flood Guage base.	SI-2066-15	10/26/15
CRAVEY RD		@ 1.8 miles.	Install	Change sign from WFWOR to Road May Flood.	SI-2070-15	10/27/15
CRAVEY RD		@ 1.71 miles.	Install	Fabricate and install flood guage kit.	SI-2069-15	10/27/15
CRAVEY RD		@ 1.5 miles.	Replace	Replace WFWOR with Road May Flood.	SI-2079-15	10/28/15
CRAVEY RD		@ 1.93 miles.	Remove	Remove School Bus Stop sign.	SI-2076-15	10/28/15
CRAVEY RD		@ 0.1 miles.	Install	Install new School Bus Stop sign and support.	SI-2082-15	10/28/15
CRAVEY RD		@ 1.93 miles.	Relocate	Relocate Speed Limit/Dogs @ Large.	SI-2077-15	10/28/15
CRAVEY RD		@ 1.45 miles.	Remove	Remove School Bus Stop sign.	SI-2080-15	10/28/15
CRAVEY RD		@ 2.0 miles.	Repair	Repair sign support, Adopt a Road.	SI-2074-15	10/28/15
CRAVEY RD		@ 1.5 to 1.45 miles.	Relocate	Relocate Left Turn sign for visibility.	SI-2081-15	10/28/15
CRAVEY RD		@ 1.98 move to 1.99 miles.	Relocate	Relocate Loose Livestock sign for visibility.	SI-2075-15	10/28/15
CRAVEY RD		@ 1.98 miles.	Remove	Remove Loose Livestock pole.	SI-2078-15	10/28/15
FOURTH ST		@ 0.03 miles.	Replace	Replace old school signs with HIP Green signs.	SI-2019-15	10/8/15
FOURTH ST		@ 0.06 miles.	Replace	Replace old school signs with HIP Green signs.	SI-2018-15	10/8/15
FRONT ST		@ 0.32 miles.	Replace	Replace old school signs with HIP Green signs.	SI-2002-15	10/8/15
FRONT ST		@ 0.23 miles.	Replace	Replace old school signs with HIP Green signs.	SI-2003-15	10/8/15
FRONT ST		@ 0.47 miles.	Replace	Replace old school signs with HIP Green signs.	SI-2000-15	10/8/15
FRONT ST		@ 0.04 miles.	Replace	Replace old school signs with HIP Green signs.	SI-2004-15	10/8/15
FRONT ST		@ 0.45 miles.	Replace	Replace old school signs with HIP Green signs.	SI-2001-15	10/8/15
FRONT ST		@ 0.02 miles.	Replace	Replace old school signs with HIP Green signs.	SI-2005-15	10/8/15
GRAPE CREEK RD		@ 3.5 miles.	Install	Install Blue button for water marker.	SI-2062-15	10/26/15
HEIN RD		@ 0.02 miles.	Install	Install Temp flood guage for missing one.	SI-2071-15	10/27/15
HEIN RD		@ 0.75 miles.	Replace	Replace WFWOR with Road May Flood	SI-2073-15	10/28/15
HIGH ST		@ 0.03 miles.	Replace	Replace old school signs with HIP Green signs.	SI-2007-15	10/8/15
HIGH ST		@ 0.45 miles.	Replace	Replace old school signs with HIP Green signs.	SI-2008-15	10/8/15
HIGH ST		@ 0.01 miles.	Replace	Replace old school signs with HIP Green signs.	SI-2006-15	10/8/15
HIGH ST		@ 0.47 miles.	Replace	Replace old school signs with HIP Green signs.	SI-2009-15	10/8/15
LONGS XING		Fabricate at shop.	Fabricate	Fabricate new street name sign.	SI-2067-15	10/27/15
LONGS XING		Fabricate at shop.	Fabricate	Fabricate new No Outlet/Private Drive sign.	SI-2068-15	10/27/15
LONGS XING		@ 0.01 miles.	Install	Install No Outlet/Private Road sign.	SI-2072-15	10/27/15
MARQUARDT RD		@ 0.1 miles.	Install	Install new School Bus Stop sign.	SI-2083-15	10/28/15
MARQUARDT RD		@ 0.1 to 0.05 miles.	Relocate	Relocate Loose Livestock sign.	SI-2084-15	10/28/15
MILL DAM RD		@ .31 miles.	Repair	Repair three bent over delineators.	SI-2061-15	10/26/15
OLD #9 HWY		@ 10.5 miles.	Repair	Repair pulled out WFWOR sign.	SI-2064-15	10/26/15
RANGER CREEK RD	8224	Fabricate at shop.	Fabricate	Fabricate 911 address plate.	SI-2054-15	10/21/15

Route	Address	Location	Activity	Details	W.O. No	Date
Signs						
SECOND ST		@ 0.4 miles.	Replace	Replace old school signs with HIP Green signs.	SI-2012-15	10/8/15
SECOND ST		@ 0.37 miles.	Replace	Replace old school signs with HIP Green signs.	SI-2013-15	10/8/15
SECOND ST		@ 0.18 miles.	Replace	Replace old school signs with HIP Green signs.	SI-2014-15	10/8/15
SECOND ST		@ 0.11 miles.	Replace	Replace old school signs with HIP Green signs.	SI-2015-15	10/8/15
SEVENTH ST		@ 0.42 miles.	Trim Brush	Trim brush for visibility of stop sign.	SI-2031-15	10/14/15
SEVENTH ST		@ 0.4 miles.	Install	Install requested Watch for Children sign.	SI-2030-15	10/14/15
SEVENTH ST		Fabricate at shop.	Fabricate	Fabricate requested Watch For Children sign.	SI-2027-15	10/14/15
SEVENTH ST		@ 0.42 miles.	Install	Install blue buttons.	SI-2032-15	10/14/15
SEVENTH ST		@ 0.3 miles.	Install	Install needed blue button.	SI-2029-15	10/14/15
SEVENTH ST		@ 0.3 miles.	Install	Install requested sign.	SI-2028-15	10/14/15
SHADY OAKS DR		@ 0.01 miles.	Replace	Replace stop/street sign and support.	SI-2053-15	10/20/15
SKY LINE DR		@ 2.5 miles.	Repair	Repair four bent over delineators.	SI-2060-15	10/26/15
THIRD ST		@ 0.37 miles.	Replace	Replace old school signs with HIP Green signs.	SI-2011-15	10/8/15
THIRD ST		@ 0.18 miles.	Replace	Replace old school signs with HIP Green signs.	SI-2017-15	10/8/15
THIRD ST		@ 0.4 miles.	Replace	Replace old school signs with HIP Green signs.	SI-2010-15	10/8/15
THIRD ST		@ 0.11 miles.	Replace	Replace old school signs with HIP Green signs.	SI-2016-15	10/8/15
UPPER CIBOLO CREEK RD		@ 0.07 and 0.1 miles.	Remove	Remove Be prepared to stop sign	SI-2025-15	10/13/15
UPPER CIBOLO CREEK RD		@ 0.15 miles.	Remove	Remove Road Work Ahead sign and barricade.	SI-2026-15	10/13/15
W FABRA LN		@ 0.2 and 0.3 miles.	Remove	Work completed. Pick up signs and barricades.	SI-1988-15	10/5/15
WALNUT GROVE NORTH		@ 1.48 miles.	Install	Install School Bus Stop sign and support.	SI-2085-15	10/28/15
ZOELLER LN	216	Fabricate at shop.	Fabricate	Fabricate 911 address plate.	SI-1987-15	10/5/15

Total WO's For Pct 4

57

Route	Address	Location	Activity	Details	W.O. No	Date
<i>Precinct</i>	<i>CW</i>					
Signs						
COUNTY LINES		@ 10.5 miles.	Turn Signs	Turn Burn Ban signs up. Ban lifted.	SI-2065-15	10/26/15
Total WO's For Pct	CW	1				

<u>Route</u>	<u>Address</u>	<u>Location</u>	<u>Activity</u>	<u>Details</u>	<u>W.O. No</u>	<u>Date</u>
Total Work Orders		107				